



2/3/4 BHK Apartments @ Sector -137, Expressway Noida
BSP @ Rs. 3800*/sqft.

About Project

Supertech Eco Citi is India's first Gold Standard Approved Project, situated in Sector 137, Noida Expressway. Supertech Eco Citi is the first eco centric development project consists: 82% Landscape area, 2 central park of 3 acres & 2 acres each within the complex, swimming pool, health club, badminton court, tennis court & amphitheatre.

Supertech Eco citi offers 2/ 3/ 4 Bedroom apartments varying in sizes from 800-2275 sqft. with world class infrastructure and facilities like kids play area, community hall, sports facility etc. The apartments have the distinctive feature of being 4 side open with extensive balconies for panoramic views and a bedroom skylight. Eco citi desires to achieve four key aspects:

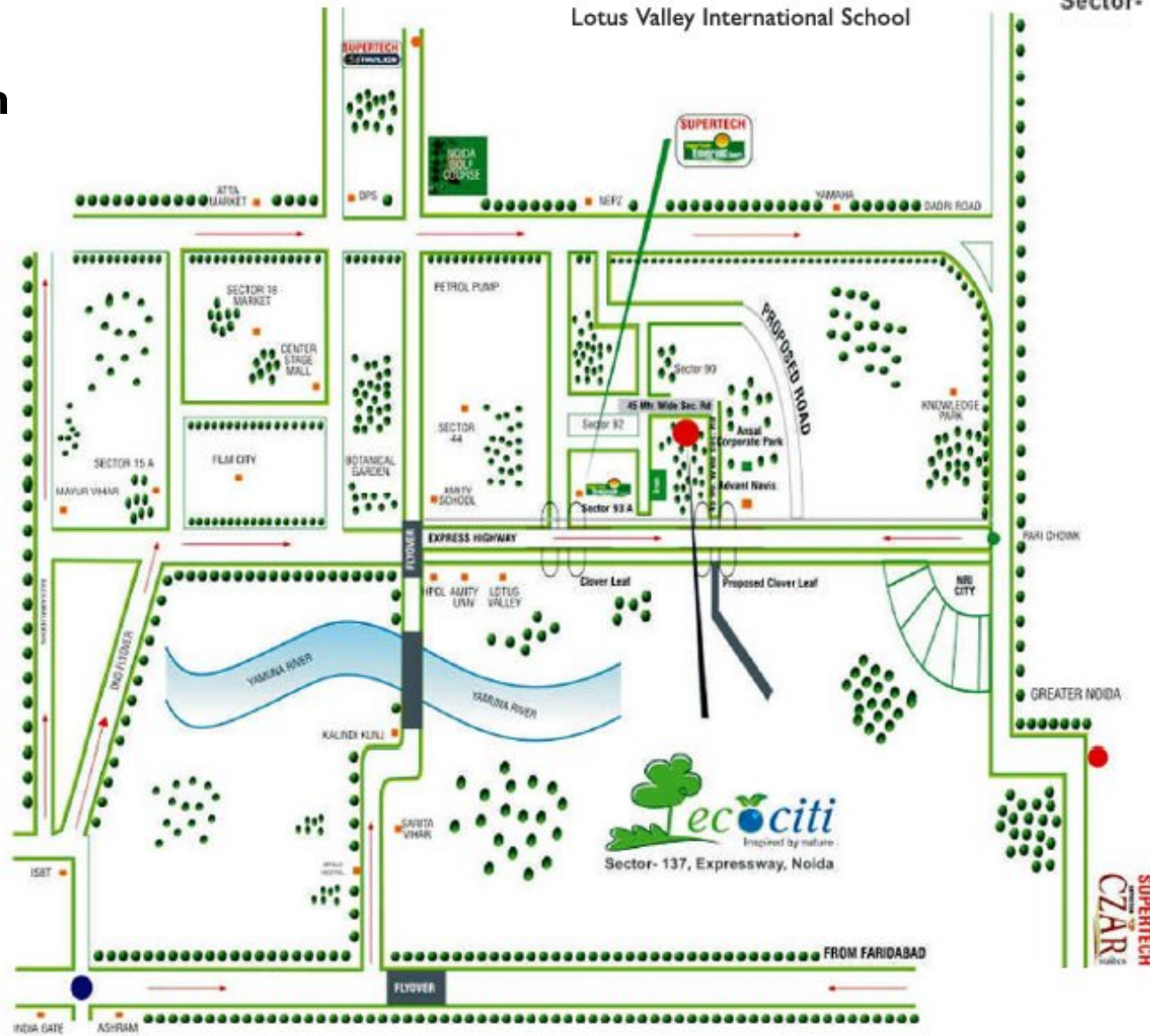
- Accessible design
- Sustainability
- Affordable innovation
- Creating a healing and nurturing environment

The architecture of the complex is incorporates features of a high level of environmentally responsible design. The buildings in Eco citi shall have natural ventilation system, use of renewable energy through solar panels and utilization of other recycled material.

Salient Features

- 82% open landscaped area
- 4 Central Park of within the complex
- 4 sided open vastu friendly Plot
- Combination of Low-rise and High-rise buildings
- 4 In-house clubs with exclusive facilities
- Swimming pool, Health Club, Medical Centre, Ayurvedic Massage Centre
- Badminton Court, Tennis Court & Amphitheatre
- Round the clock customer care
- 24 hour water & power supply
- Reticulated gas supply to every kitchen
- Shopping complex within the complex
- Vaastu friendly fengshui layout & design
- Ample parking space
- Well-designed complex with beautiful landscape

Location Plan



Floor Plan



Available In Tower : U

Floor Plan

2 BHK - Type B
Area - 890 Sq. Ft.



Available In Tower : D, E, F, Q, R, U, V

An ISO 9001:2008 company



SUMANGALAM

Your Home Planners

Floor Plan

2 BHK - Type C
Area - 1082 Sq. Ft.



- 2 Bedrooms • 2 Toilets • Kitchen • Dining • Drawing • 3 Balconies

1 Sq. Mtr. = 10.764 Sq. Ft.



Available In Tower : A, F, Q, S, T, U

An ISO 9001:2008 company

Floor Plan

3 BHK Type A
Area - 1295 Sq. Ft.



• 3 Bedrooms • 2 Toilets • Kitchen • Dining • Drawing • 3 Balconies



Available In Tower : B, C, G, H, O

An ISO 9001:2008 company



SUMANGALAM

Your Home Planners

Floor Plan



Available In Tower : C

An ISO 9001:2008 company

3 BHK Type B
Area - 1595 Sq. Ft.



ENTRY • 3 Bedrooms • 3 Toilets • Kitchen • Dining • Drawing • 4 Balconies



An ISO 9001:2008 company

Floor Plan

3 BHK Type B
Area - 1595 Sq. Ft.



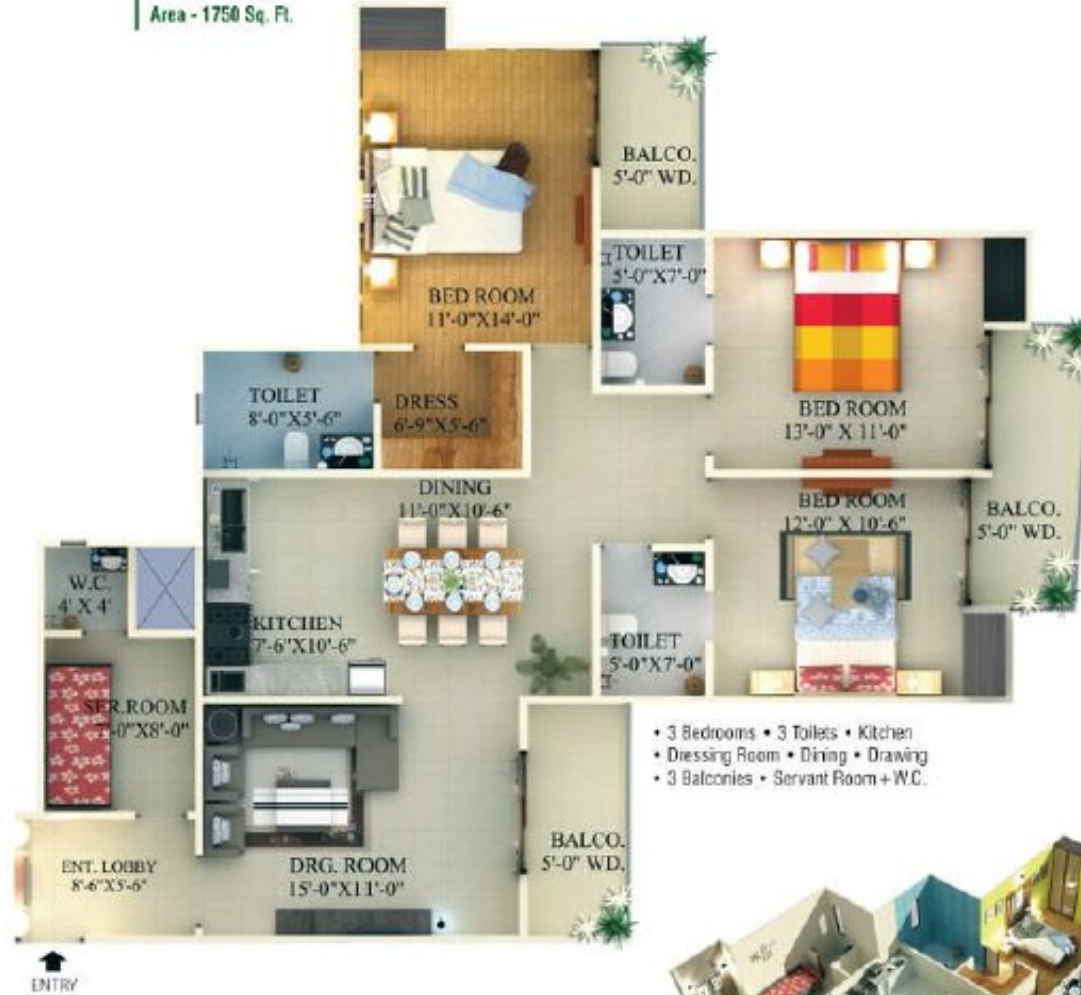
ENTRY • 3 Bedrooms • 3 Toilets • Kitchen • Dining • Drawing • 4 Balconies



An ISO 9001:2008 company

Floor Plan

3 BHK + SQ
Area - 1750 Sq. Ft.



- 3 Bedrooms • 3 Toilets • Kitchen
- Dressing Room • Dining • Drawing
- 3 Balconies • Servant Room + W.C.



An ISO 9001:2008 company

Floor Plan

4 BHK + Store + SQ
Area - 2275 Sq. Ft.



An ISO 9001:2008 company

Specifications

Location	Floor	External Door and Window	Electrical Fittings	Walls	Fittings	Internal Door	Hardware	Electrical	Water Supply	Ceilings
Living Room	Vitrified tiles	Powder coated aluminium with double rebate	Sheet and switches	Oil bound distemper	-	Flush shutter with wooden frame	All doors and windows with metal fittings	Copper wiring and fittings	Underground and overhead water tanks	Oil bound distemper
Dining	Vitrified tiles	Powder coated aluminium with double rebate	Sheet and switches	Oil bound distemper	-	Flush shutter with wooden frame				Oil bound distemper
Bedroom	Vitrified tiles	Powder coated aluminium with double rebate	Sheet and switches	Oil bound distemper	-	Flush shutter with wooden frame				Oil bound distemper
Master Bedroom	Vitrified tiles	Powder coated aluminium with double rebate	Sheet and switches	Oil bound distemper	-	Flush shutter with wooden frame				Oil bound distemper
Dressing Room	Vitrified tiles	Powder coated aluminium with double rebate	Sheet and switches	Oil bound distemper	-	Flush shutter with wooden frame				Oil bound distemper
Servant Room	Ceramic tiles	Powder coated aluminium with double rebate	Sheet and switches	Oil bound distemper	-	Flush shutter with wooden frame				Oil bound distemper

Specifications

Kitchen	Vitrified tiles	Powder coated aluminium with double rebate	Sheet and switches	Ceramic tiles of 2' height from the platform	Stainless steel sink with C.P fittings	Open				Oil bound distemper
Toilet	Ceramic tiles	-	Sheet and switches	Ceramic tiles of 7' height	Washbasin WC & CP fittings	Flush shutter				False ceiling
Balconies	Ceramic tiles	-	Sheet and switches	Oil bound distemper	-	-				Permanent paint finish
Lift	PVC Flooring	-	Sheet and switches	-	-	-				-
Lobbies / Corridor	Kota Stone / Vitrified tiles	-	-	Oil bound distemper	-	-				-
Exterior Finish	-	-	-	Texture Paint	-	Flush shutter with wooden frame				-

Price List

2 Bedroom			
Basic Parameters	DPP	FLEXI	CLP
Super Area	890	890	890
Total Price (Per Sq. Ft.)	3600	3800	4000
Flat Costing			
Total Price of Flat Total (A)	3204000	3382000	3560000
3 Bedroom			
Basic Parameters	DPP	FLEXI	CLP
Super Area	1295	1295	1295
Total Price (Per Sq. Ft.)	3600	3800	4000
Flat Costing			
Total Price of Flat Total (A)	4662000	4921000	5180000
3 Bedroom + SQ			
Basic Parameters	DPP	FLEXI	CLP
Super Area	1505	1505	1505
Total Price (Per Sq. Ft.)	3600	3800	4000
Flat Costing			
Total Price of Flat Total (A)	5418000	5719000	6020000
3 Bedroom + SQ			
Basic Parameters	DPP	FLEXI	CLP
Super Area	1750	1750	1750
Total Price (Per Sq. Ft.)	3600	3800	4000
Flat Costing			
Total Price of Flat Total (A)	6300000	6650000	7000000

Price List

2 Bedroom			
Basic Parameters	DPP	FLEXI	CLP
Super Area	1082	1082	1082
Total Price (Per Sq. Ft.)	3600	3800	4000
Flat Costing			
Total Price of Flat Total (A)	3895200	4111600	4328000
3 Bedroom			
Basic Parameters	DPP	FLEXI	CLP
Super Area	1405	1405	1405
Total Price (Per Sq. Ft.)	3600	3800	4000
Flat Costing			
Total Price of Flat Total (A)	5058000	5339000	5620000
3 Bedroom			
Basic Parameters	DPP	FLEXI	CLP
Super Area	1595	1595	1595
Total Price (Per Sq. Ft.)	3600	3800	4000
Flat Costing			
Total Price of Flat Total (A)	5742000	6061000	6380000
4 Bedroom + Store + SQ			
Basic Parameters	DPP	FLEXI	CLP
Super Area	2275	2275	2275
Total Price (Per Sq. Ft.)	3600	3800	4000
Flat Costing			
Total Price of Flat Total (A)	8190000	8645000	9100000

Price List

Preferential Location Charges	Rs / Per Sq. Ft.
1st Floor	150
2nd Floor	130
3rd Floor	110
4th Floor	90
5th Floor	70
6th Floor	50
7th Floor	30
Pool / Club / Park Facing	50
Corner /Front / Road Facing	25
Additional Charges (Mandatory)	Price
One Time Lease Rent	Rs.100/sq.ft.
Fire Fighting Charges (FFC)	Rs.40/sq.ft.
External Development Charges (EDC)	Rs.85/sq.ft.
Interest Free Maintenance Security(IFMS)	Rs.50/sq.ft.
Covered Car Parking	3,00,000/-
Club Membership	1,00,000/-
Electricity Installation Charges	20,000/- KVA
1 sq meter = 10.764 sq feet	
Terms and Conditions	
1) Cheques/Bank Draft to be issued in favour of SUPERTECH LIMITED Payable at New Delhi. Out station cheques shall not be accepted.	
2) Registration, Stamp Duty and other charges shall be payable at the time of offer of possession.	
3) Price is escalation free for the Apartments booked.	
4) Timely payments of the installments are the essence of the Agreement.	
5) On Delayed Payments Company will charge interest @2% Month for any delayed Period.	
6) Service Tax is Extra as Applicable	

Payment Plan

(A) Down Payment Plan (BSP + PLC)	
At the time of booking	10%
Within 30 days from booking	85%
On offer of possession	5%
(B) Flexi Payment Plan (BSP + PLC)	
At the time of booking	10%
Within 45 days of booking	40%
On completion of foundation	9%
On casting of second floor slab	9%
On casting of fifth floor slab	9%
On casting of eighth floor slab	9%
On offer of possession	5%
(C) Construction Linked Payment Plan (BSP + PLC)	
At the time of booking	10%
Within 30 days of booking	10%
On completion of foundation	10%
On casting of basement slab	8%
On casting of second floor slab	8%
On casting of fifth floor slab	8%
On casting of eighth floor slab	8%
On casting of twelfth floor slab	8%
On casting of fourteen floor slab	8%
On brickwork	6%
On interior plaster	6%
On flooring and tiles	5%
On offer of possession	5%



An ISO 9001:2008 company



Your Home Planners

SUMANGALAM PROPMART PVT. LTD.

F 27 / 28, Sector - 18 , Noida
Mobile : **+91 9560598802 / 03**
Toll free : 1800 - 103 - 7707
SMS <HOME> to 53030

Email : info@sumangalampropmart.com
Website : www.sumangalampropmart.com