



You will enjoy the view, and so will the rest.

NEW TOWER LAUNCH

PREMIUM 3BHK UNITS
1592sqft. - 1695sqft. only



PARAS
TIEREA

A home your heart desires!

Sec-137, Expressway Noida

An ISO 9001:2008 company

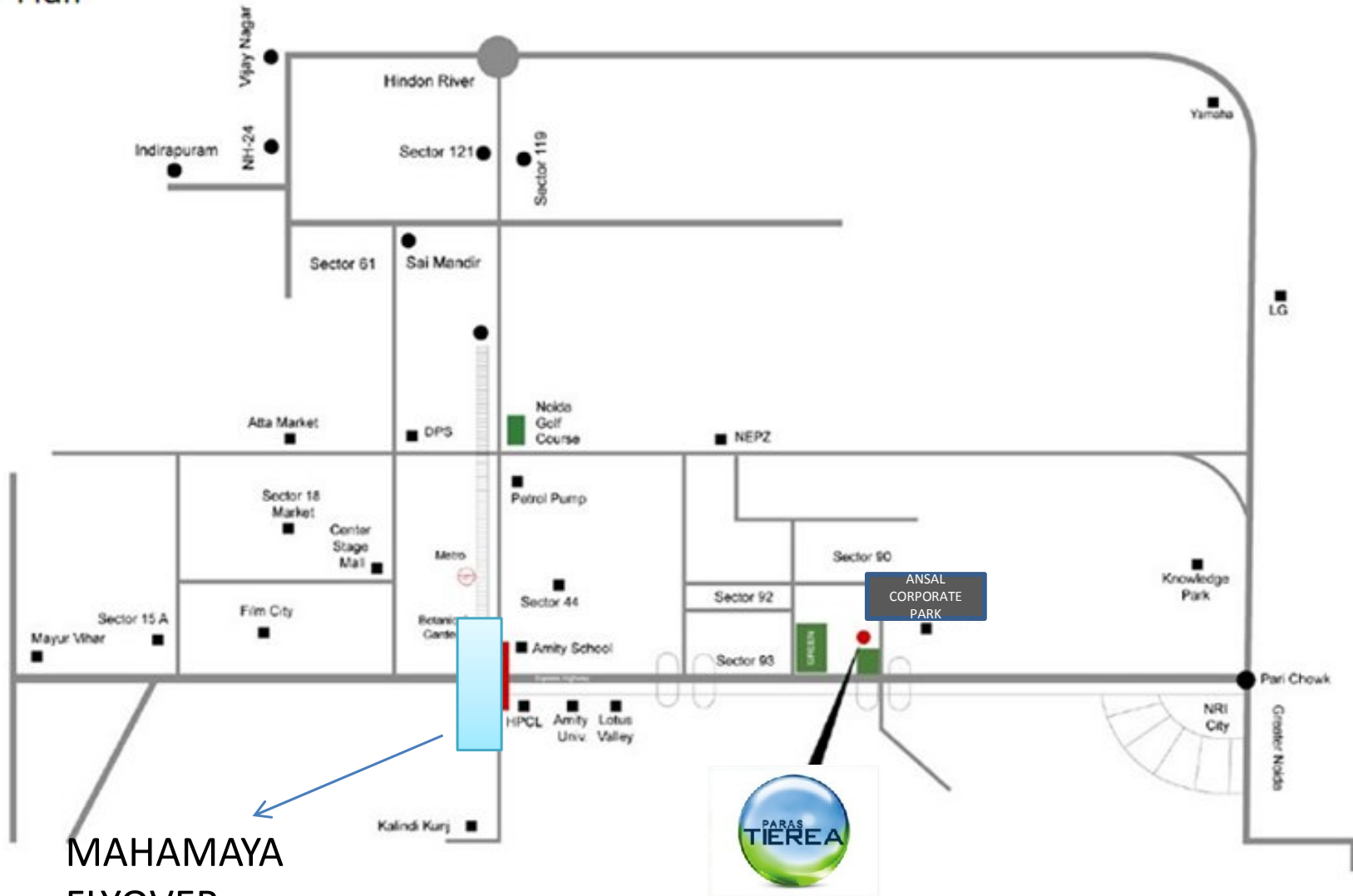


SUMANGALAM

Your Home Planners

TM

Location Plan



MAHAMAYA
 FLYOVER

EXPRESSWAY
 TOWARDS
 GREATER NOIDA

Site Plan



t28

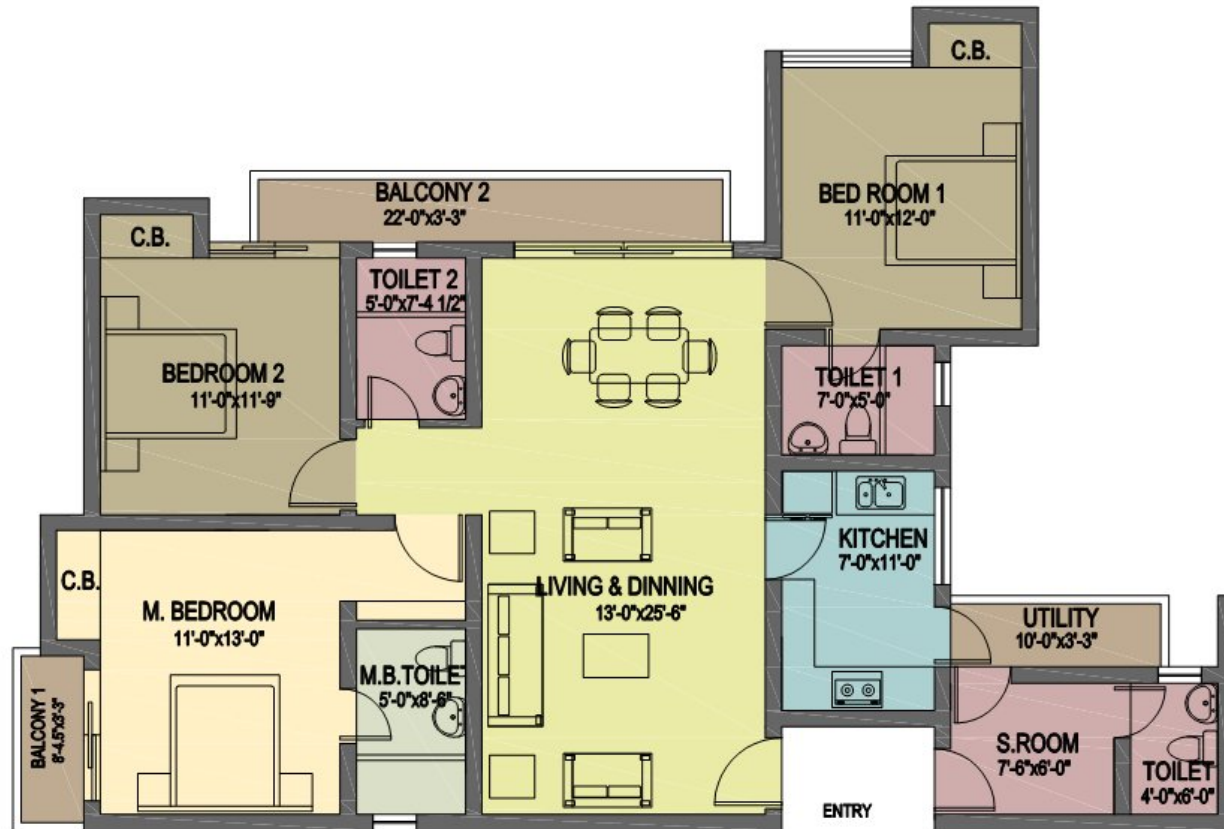


UNIT TYPE- D (3BHK+3 TOILETS+SERVANT ROOM+UTILITY)
SUPER AREA = 1592 sqft

PARAS TIEREA

NOTE : THE LAYOUT PLAN AND THE AREAS ARE TENTATIVE AND SUBJECT TO VARIATIONS AND MODIFICATIONS AT THE SOLE DISCRETION OF THE COMPANY

An ISO 9001:2008 company



UNIT TYPE-E (3BHK+4 TOILETS+SERVANT ROOM+UTILITY)
SUPER AREA = 1695 sqft

NOTE : THE LAYOUT PLAN AND THE AREAS ARE TENTATIVE AND SUBJECT TO VARIATIONS AND MODIFICATIONS AT THE SOLE DISCRETION OF THE COMPANY

PARAS TIEREA

An ISO 9001:2008 company



SUMANGALAMTM

Your Home Planners

Price List

Basic Price (BSP)	Rs. 4150* / sqft.
PLC	
Ground Floor	Rs. 200 / sqft.
1 st to 6 th Floor	Rs. 150 / sqft.
7 th to 12 th Floor	Rs. 100 / sqft.
Extra Charges	
1. Covered Car Parking @ Rs. 200000 / - per bay 2. Lease Rent @ Rs. 100/- psft 3. IFMS @ Rs. 50/ - psft 4. Infrastructure Charges @ Rs. 200/- Psft 5. Service tax will be charged extra. 6. Tower 25: Landscape PLC : Unit No. 2,3,4,5 @ Rs. 50/-Psft 7. Tower 25 : Corner PLC : Unit No. 1,2,5,6 @ Rs. 30/-Psft 8. Tower 26 : Landscape facing PLC @ Rs. 50 / - Psft for Unit No. 1 and 2 9. Cheque / Draft to be issued in favour of " Paras Tierrea A/C IHVPL" 10. No EMI till 24 months.	

Payment Plan

Construction Linked Payment Plan	
On application of booking	10 %
Within 45 days of allotment	10 %
At the time of start of excavation	10 %
On completion of 2 nd floor roof slab	10 % + 50 % PLC
On completion of 4 th floor roof slab	10 %
On completion of 8 th floor roof slab	7.50 % + 50 % Lease Rent + 50 % IDC
On completion of 10 th floor roof slab	7.5 % + 50 % IDC
On completion of Top floor roof slab	7.50 %
On completion of brick work	7.50 % + 50 % Lease Rent + 50 % IDC
On completion of Electric Conducting & Wiring	7.50 %
On completion of Plumbing Work	7.50 %
At the time of possession	5 % + 100 % IFMS

An ISO 9001:2008 company TM



SUMANGALAM PROPMART Pvt. Ltd.

F- 27,28 , Sector -18 , Noida (201301)

Mobile : + **91 9560598800/01** , Toll Free : **1800 - 103 - 7707**

E-mail : info@sumangalampropmart.com

Web : www.sumangalampropmart.com