



*Exclusivity is
something you have earned.
So enjoy it!*

Welcome to your dream home at



Sec-137, Expressway, Noida
Studio/Low Rize/The Rize Apartments



Paras Buildtech India Pvt. Ltd.

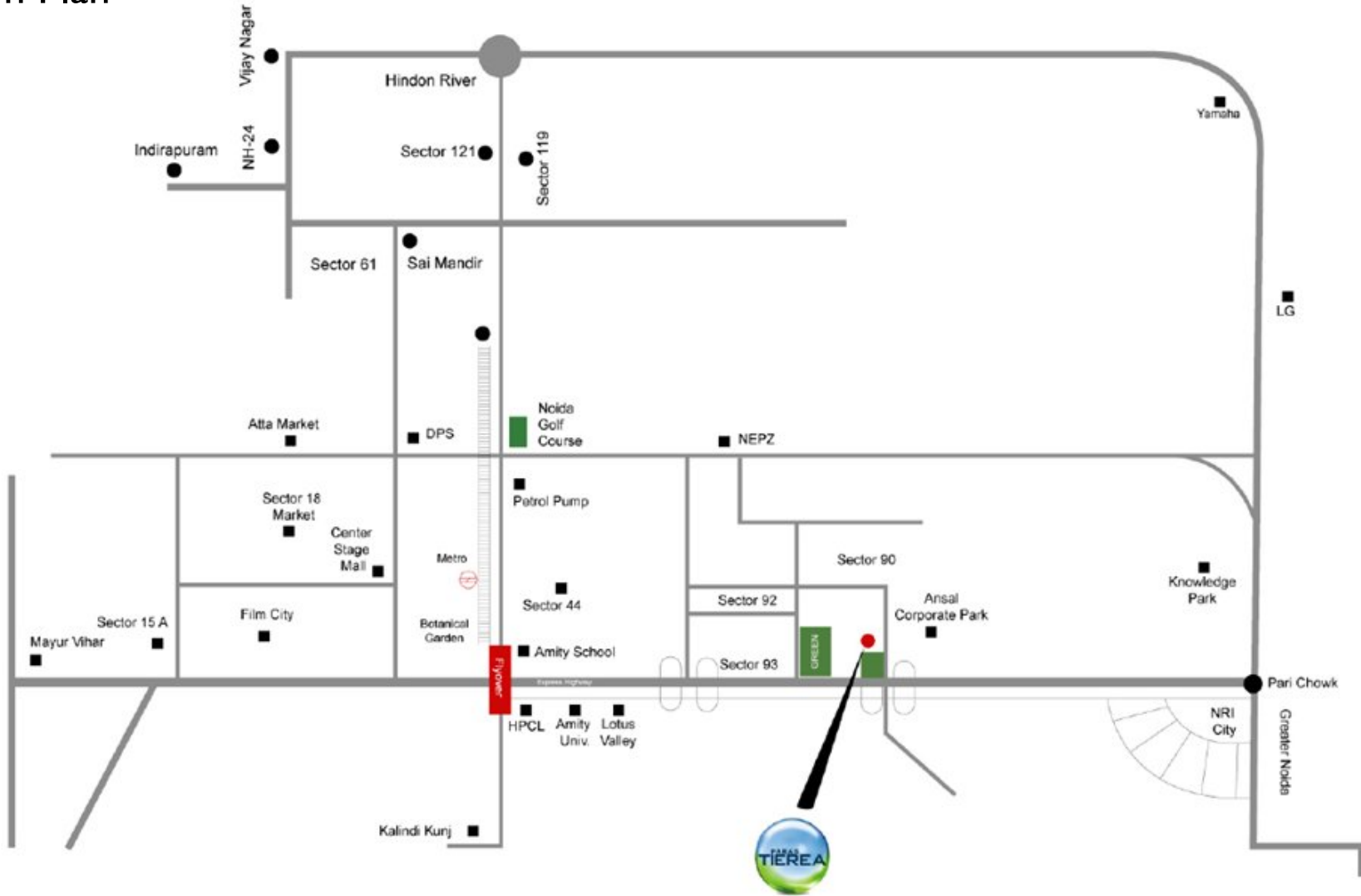


A home your heart desires!

Sec-137, Expressway Noida



Location Plan



Site Plan

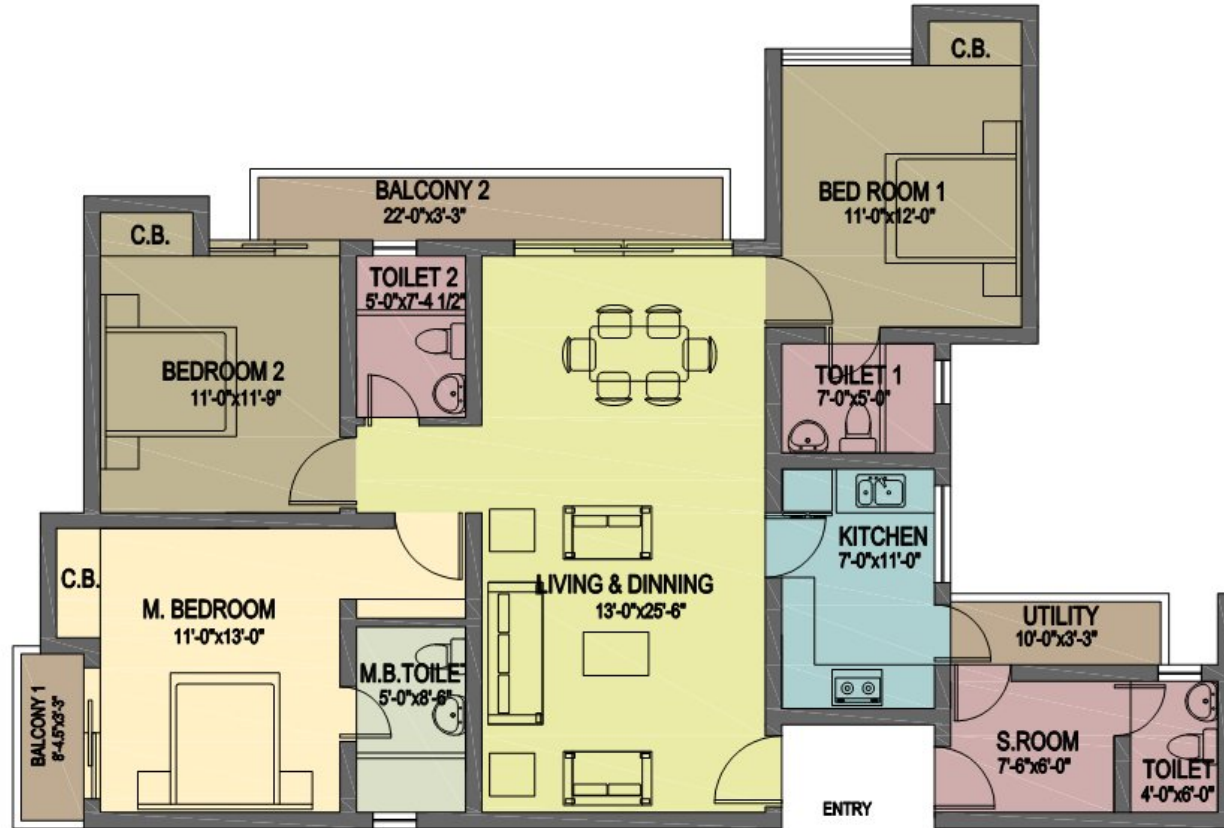




UNIT TYPE- D (3BHK+3 TOILETS+SERVANT ROOM+UTILITY)
SUPER AREA = 1592 sqft

PARAS TIEREA

NOTE: THE LAYOUT PLAN AND THE AREAS ARE TENTATIVE AND SUBJECT TO VARIATIONS AND MODIFICATIONS AT THE SOLE DISCRETION OF THE COMPANY



UNIT TYPE-E (3BHK+4 TOILETS+SERVANT ROOM+UTILITY)
SUPER AREA = 1695 sqft

NOTE : THE LAYOUT PLAN AND THE AREAS ARE TENTATIVE AND SUBJECT TO VARIATIONS AND MODIFICATIONS AT THE SOLE DISCRETION OF THE COMPANY

PARAS TIEREA

TOWER 28

Basic Price	Rs. 4050 /-Per Sqft
PLC	
Ground Floor	Rs. 200/-
1st to 6th Floor	Rs. 150/-
7th to 12th Floor	Rs. 100/-

ADDITIONAL EXTRA CHARGES

1. Covered Car Parking @ Rs. 200000/- Per Bay
2. Lease Rent@ Rs 100/- Psqft
3. IFMS @ Rs. 50/- Psqft
4. Infrastructure Charges @ Rs. 200/- Psqft
5. Service Tax will be charged extra.
6. Cheque/ draft to be issued in favour of " Paras Tierea A/c IHVPL"

Note: No EMI till 24 months.

PAYMENT PLAN FOR PARAS TIAREA	
Construction Linked Payment Plan	
On Application for Booking	10%
Within 45 days from Allotment	10%
At the time of start of excavation	10%
On completion of 2nd Floor roof slab	10%+50% of PLC
On completion of 4th Floor roof slab	10%
On completion of 8th Floor roof slab	7.50%+50% LEASE RENT+50% IDC
On completion of 10th Floor roof slab	7.5% + 50% PLC
On completion of Top Floor roof slab	7.50%
On completion of Brick work	7.50%+50% LEASE RENT+50% IDC
On completion of Electrical Conduiting & wiring	7.50%
On completion of Plumbing work	7.50%
At the time of notice of possession	5%+100% IFMS

