



*Exclusivity is  
something you have earned.  
So enjoy it!*

*Welcome to your dream home at*



Sec-137, Expressway, Noida  
Studio/Low Rise/High Rise Apartments



Paras Buildtech India Pvt. Ltd.



*A home your heart desires!*

Sec-137, Expressway Noida

An ISO 9001:2000 company



**SUMANGALAM**

Your Home Planners



Paras Tierrea

*A truly exceptional lifestyle!*

## STUDIO APARTMENTS



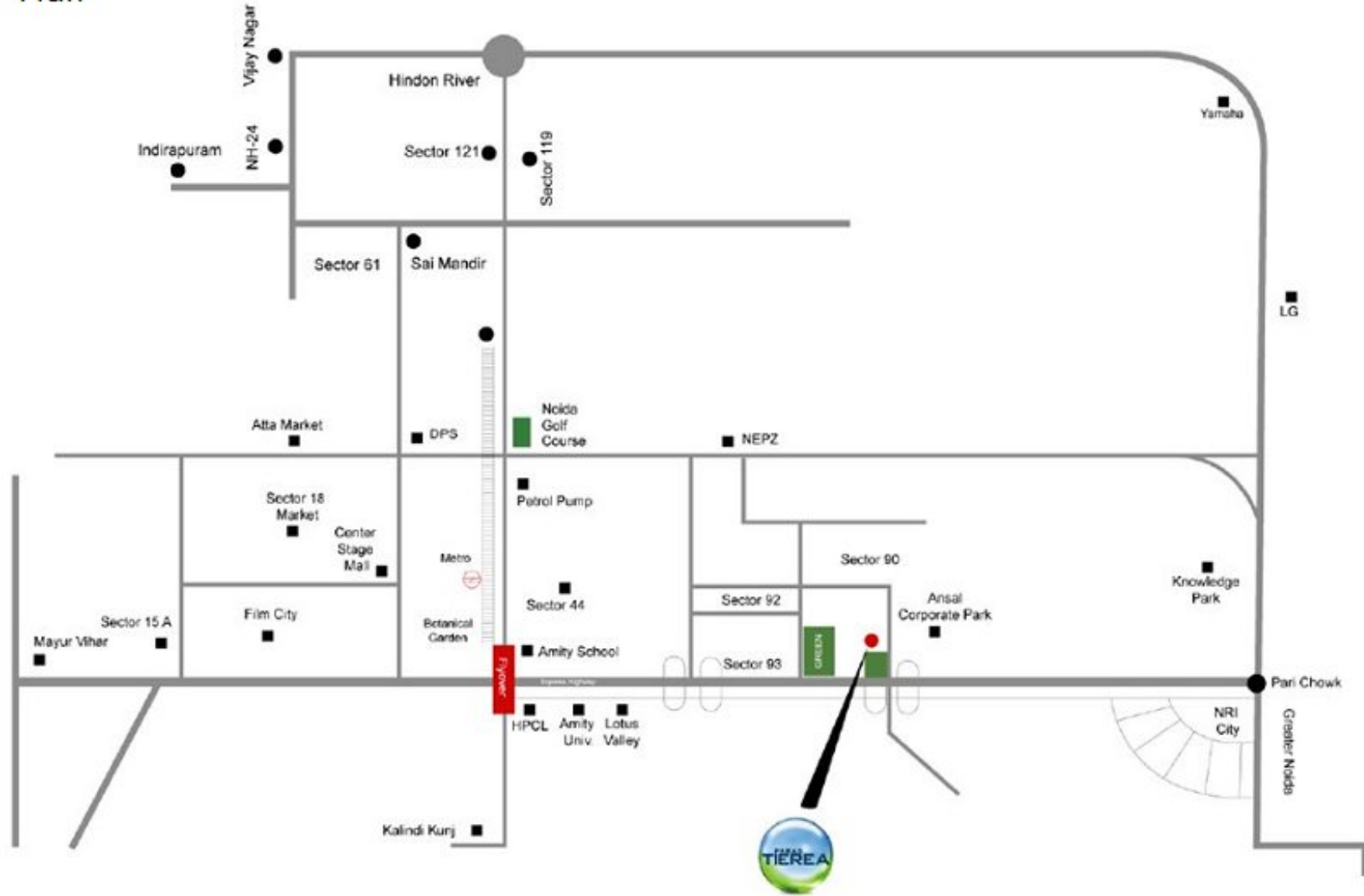
An ISO 9001:2000 company



**SUMANGALAM**

Your Home Planners

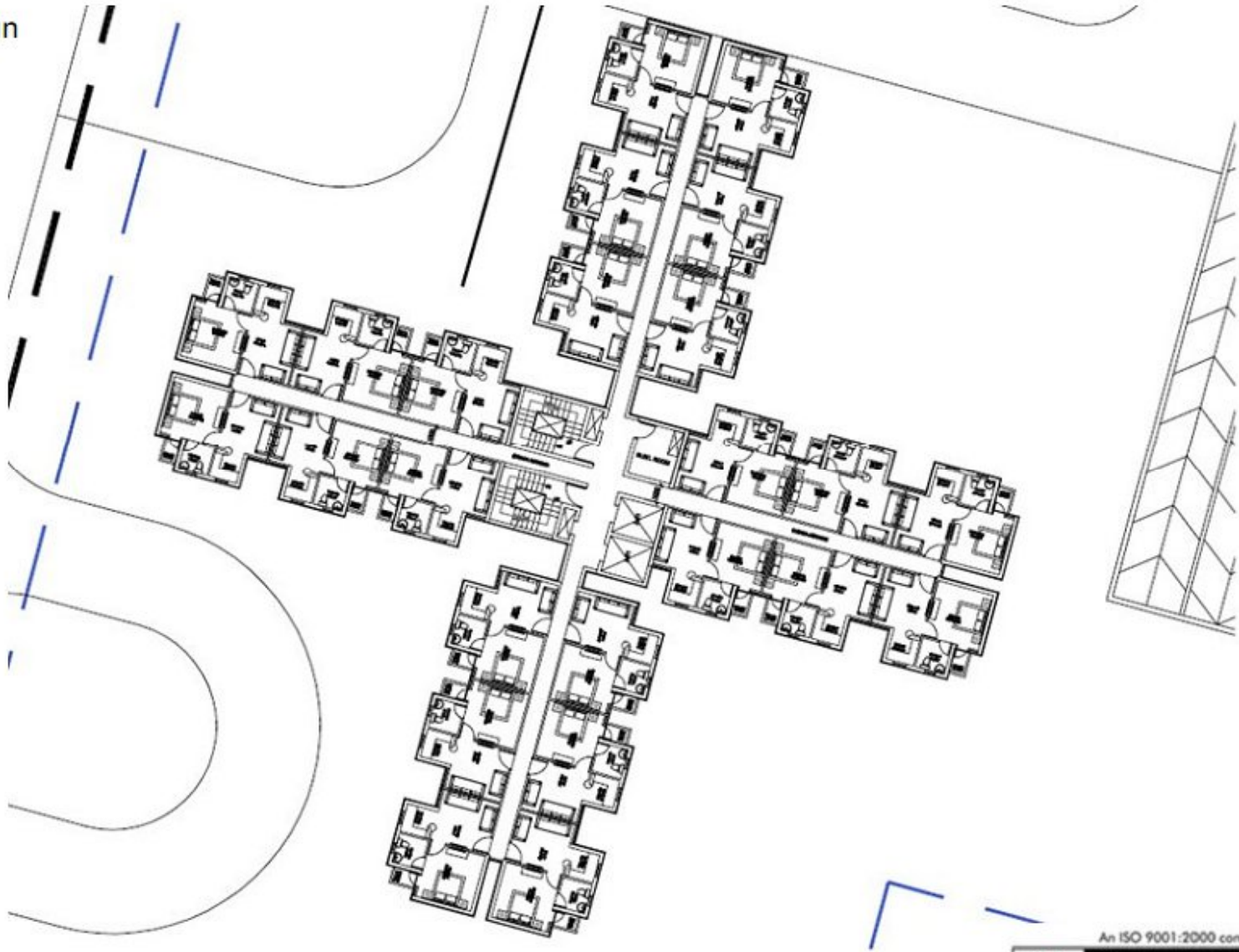
# Location Plan



# Site Plan



# Cluster Plan



# Floor Plan



**STUDIO APARTMENT- ( 1BHK+ 1TOILET)**

**SUPER AREA = 450 Sqft**

NOTE : THE LAYOUT PLAN AND THE AREAS ARE TENTATIVE AND SUBJECT TO VARIATIONS AND MODIFICATIONS AT THE SOLE DISCRETION OF THE COMPANY

PARAS TIEREA



### The Clubhouse

*A confluence of Mind, Body & Soul!*



An ISO 9001:2000 company

PRICE LIST FOR STUDIO APARTMENTS	
Floor	Construction Link Plan (CLP)Rs/sqft
1 <sup>st</sup> to 4 <sup>th</sup> Floor	4440
5 <sup>th</sup> to 8 <sup>th</sup> Floor	4400
9 <sup>th</sup> to 12 <sup>th</sup> Floor	4360
13 <sup>th</sup> to 16 <sup>th</sup> Floor	4320
17 <sup>th</sup> to 28 <sup>th</sup> Floor	4300
Other Charges: <ul style="list-style-type: none"> <li>1. Lease Rent @ Rs 100/- Psqft</li> <li>2. IFMS @ Rs. 50/- Psqft</li> <li>3. Infrastructure Charges @ Rs. 200/- Psqft</li> <li>4. Service tax will be payable extra</li> <li>5. Landscape PLC @ Rs. 50</li> <li>6. Cheque/ draft to be issued in favour of Paras Tiera A/c IHVPL</li> <li>7. Car Parking @ Rs. 2 Lacs*</li> </ul>	

## FURNISHING

- . DOUBLE BED
- . SOFA WITH CENTRE TABLE
- . SHOWER CUBICAL
- . WARDROBE
- . AC (2 No.)
- . LIGHTING, FIXTURE & FAN
- . LCD TV
- . MODULAR KITCHEN WITH  
 (MICROWAVE, FRIDGE, HOB NOB & CHIMNEY)

## Payment Plan

<b>CONSTRUCTION LINKED PAYMENT PLAN</b>	
Within 45 days from allotment	10 %
At the time of start of excavation	10 %
On completion of 2nd floor roof slab	10 %
On completion of 6th floor roof slab	10 %
On completion of 10th floor roof slab	7.5 % + 50 % Lease Rent + IDC
On completion of 14th floor roof slab	7.5 % + 50 % Lease Rent + IDC
On completion of Top floor roof slab	7.50 %
On completion of Brick Work	7.50 %
On completion of Electrical conducting & wiring	7.50 %
On completion of plumbing work	7.50 %
At time of notice of possession	5 % + IFMS + Landscape PLC



## SUMANGALAM PROPMART PVT. LTD.

F 27 / 28, Sector - 18 , Noida

Mobile : +91 9560598800/01

Toll free : 1800 - 103 - 7707

SMS <HOME> to 53030

Email : [info@sumangalampropmart.com](mailto:info@sumangalampropmart.com)

Website : [www.sumangalampropmart.com](http://www.sumangalampropmart.com)