



*Exclusivity is  
something you have earned.  
So enjoy it!*

*Welcome to your dream home at*



Sec-137, Expressway, Noida  
Studio/Low Rise/High Rise Apartments



Paras Buildtech India Pvt. Ltd.



*A home your heart desires!*

Sec-137, Expressway Noida

An ISO 9001:2000 company

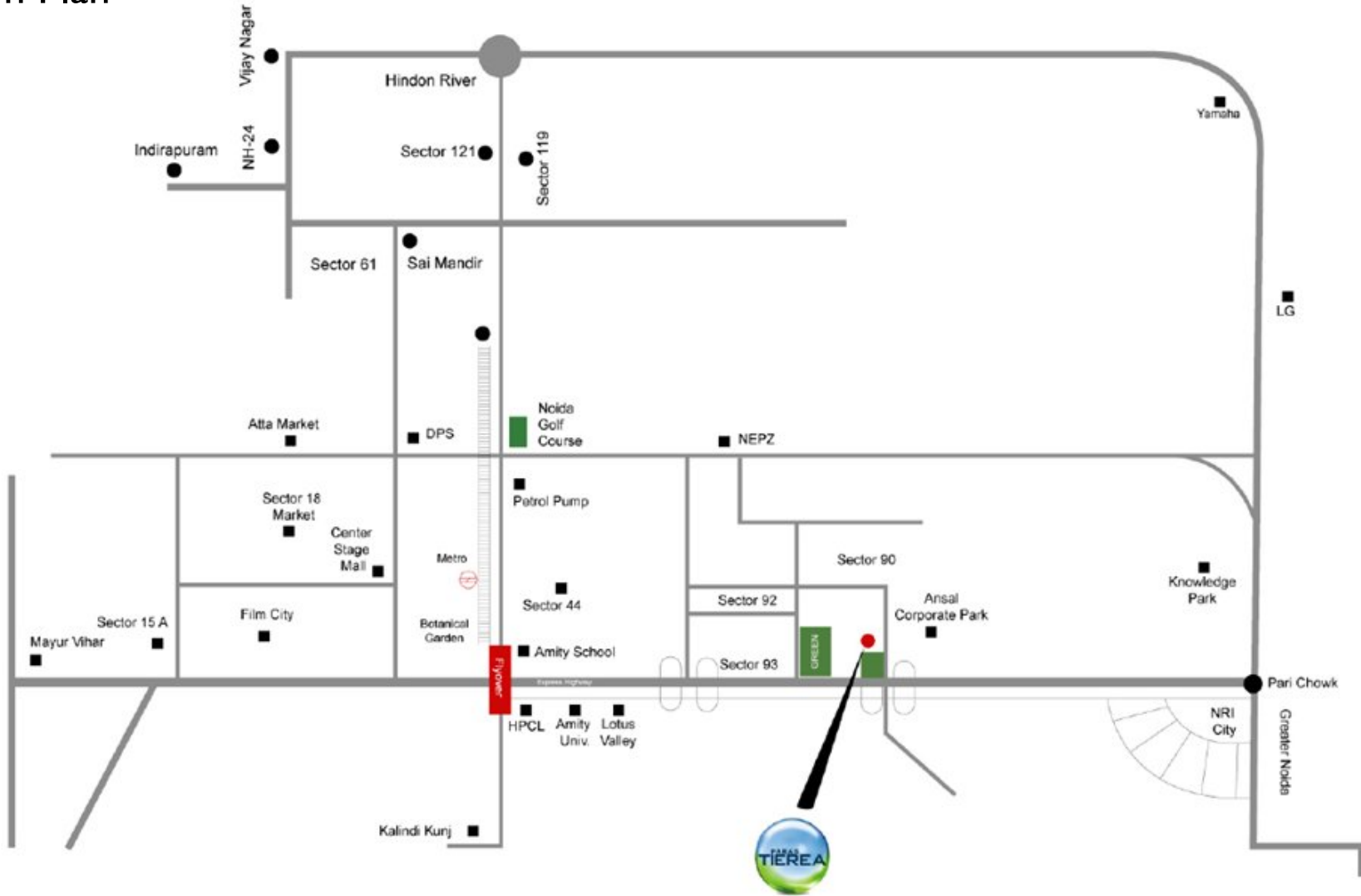


**SUMANGALAM**

Your Home Planners

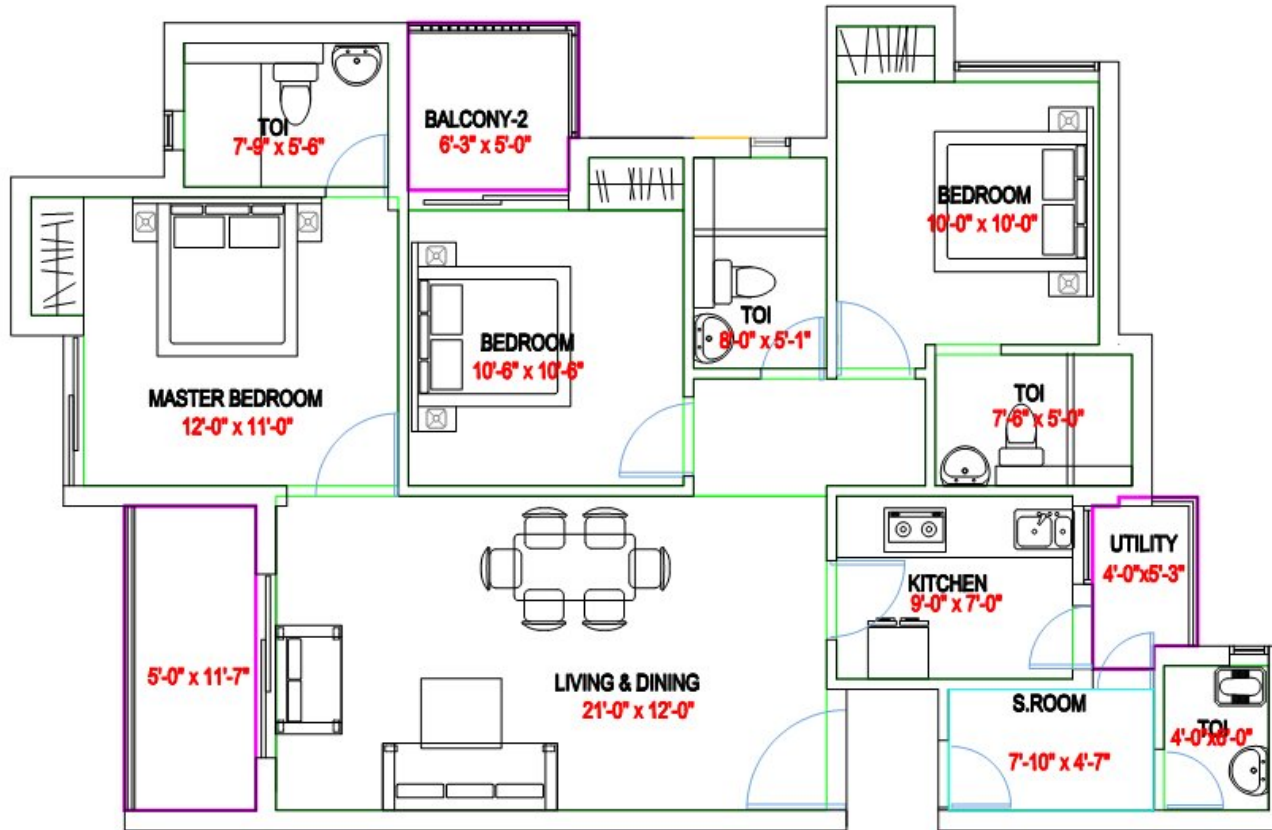


# Location Plan



# Site Plan



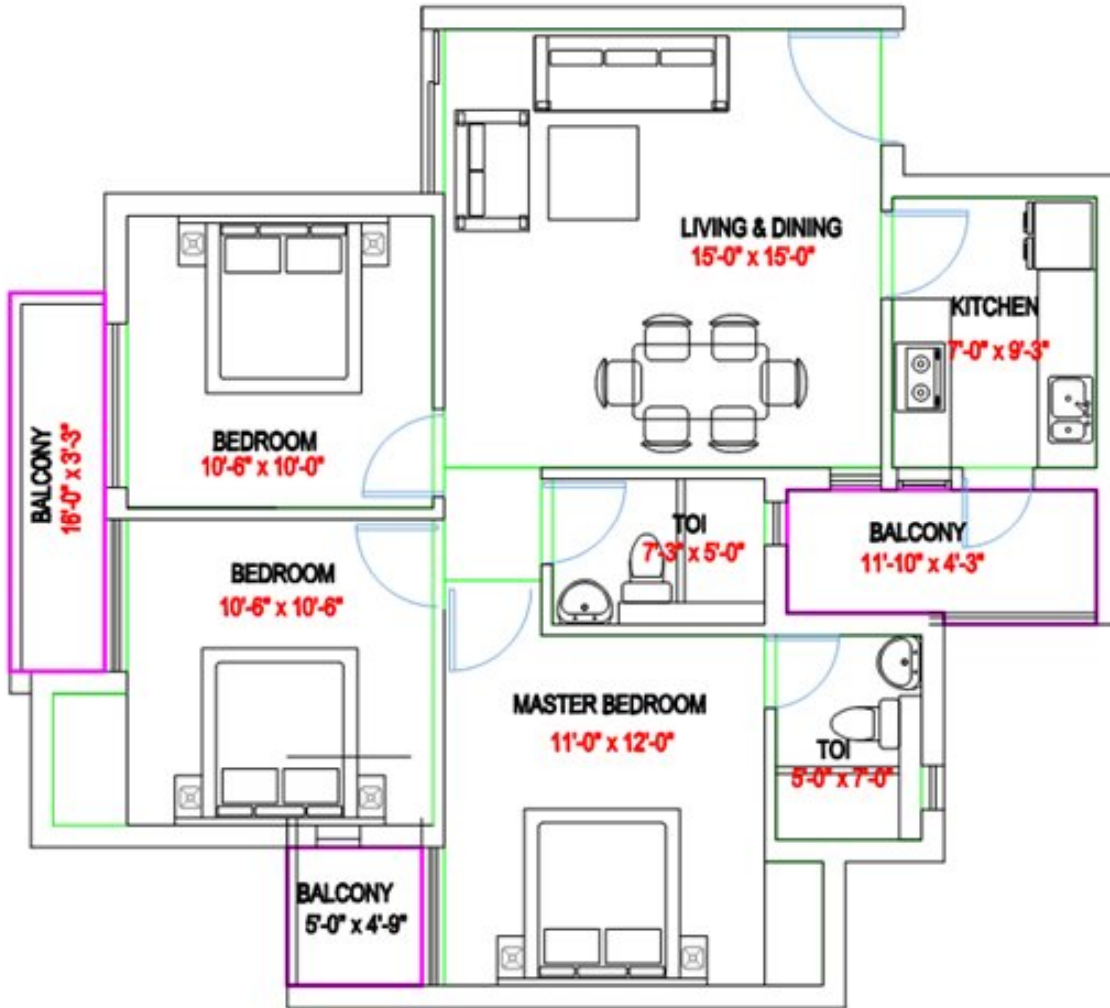


**3 BHK (TYPE-2)**

**SUPER BUA= 1565 SQ.FT.**

NOTE : THE LAYOUT PLAN AND THE AREAS ARE TENTATIVE AND SUBJECT TO VARIATIONS AND MODIFICATIONS AT THE SOLE DISCRETION OF THE COMPANY  
 1 SQ.MT = 10.764 SQ.FT

**PARAS TIEREA**



**3 BHK (TYPE-1)**

**SUPER BUA= 1330 SQ.FT.**

NOTE : THE LAYOUT PLAN AND THE AREAS ARE TENTATIVE AND SUBJECT TO VARIATIONS AND MODIFICATIONS AT THE SOLE DISCRETION OF THE COMPANY  
 1 SQ.MT = 10.764 SQ.FT

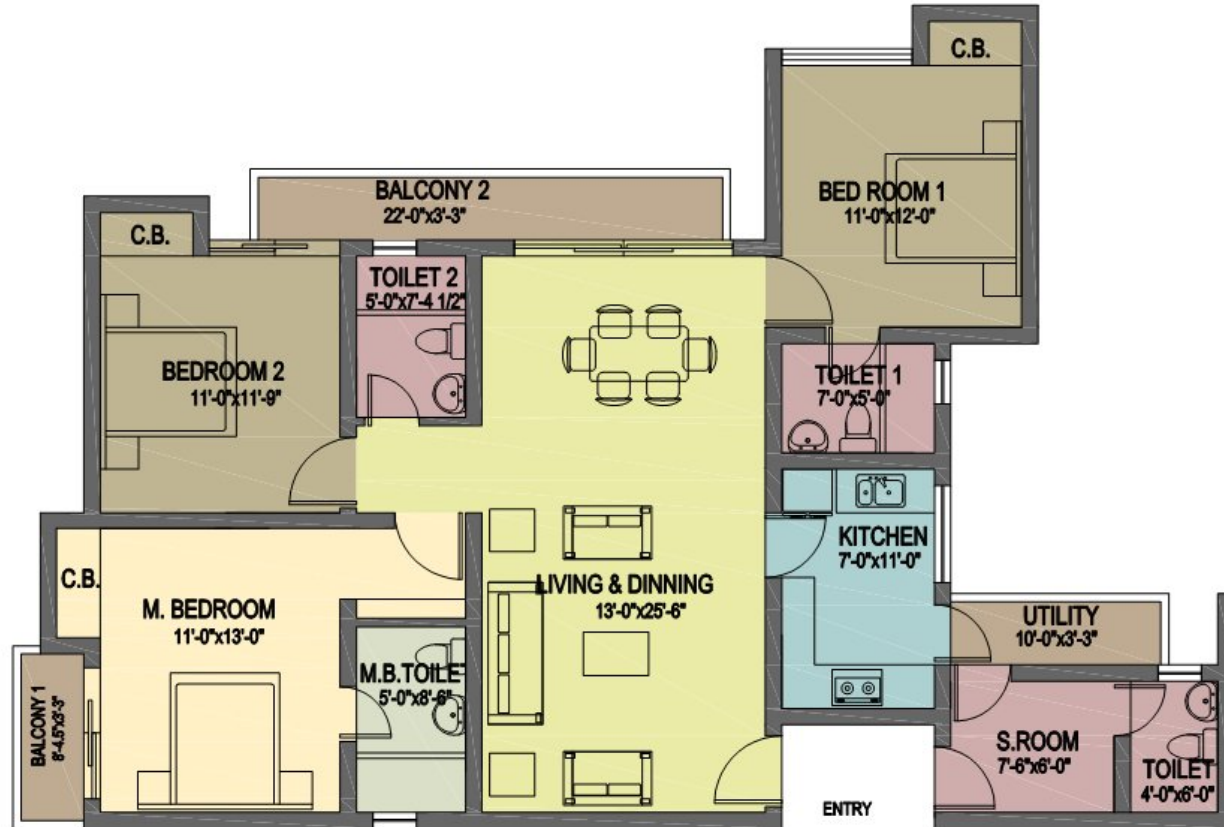
**PARAS TIEREA**



**UNIT TYPE- D (3BHK+3 TOILETS+SERVANT ROOM+UTILITY)**  
**SUPER AREA = 1592 sqft**

PARAS TIEREA

NOTE: THE LAYOUT PLAN AND THE AREAS ARE TENTATIVE AND SUBJECT TO VARIATIONS AND MODIFICATIONS AT THE SOLE DISCRETION OF THE COMPANY



**UNIT TYPE-E (3BHK+4 TOILETS+SERVANT ROOM+UTILITY)**  
**SUPER AREA = 1695 sqft**

NOTE : THE LAYOUT PLAN AND THE AREAS ARE TENTATIVE AND SUBJECT TO VARIATIONS AND MODIFICATIONS AT THE SOLE DISCRETION OF THE COMPANY

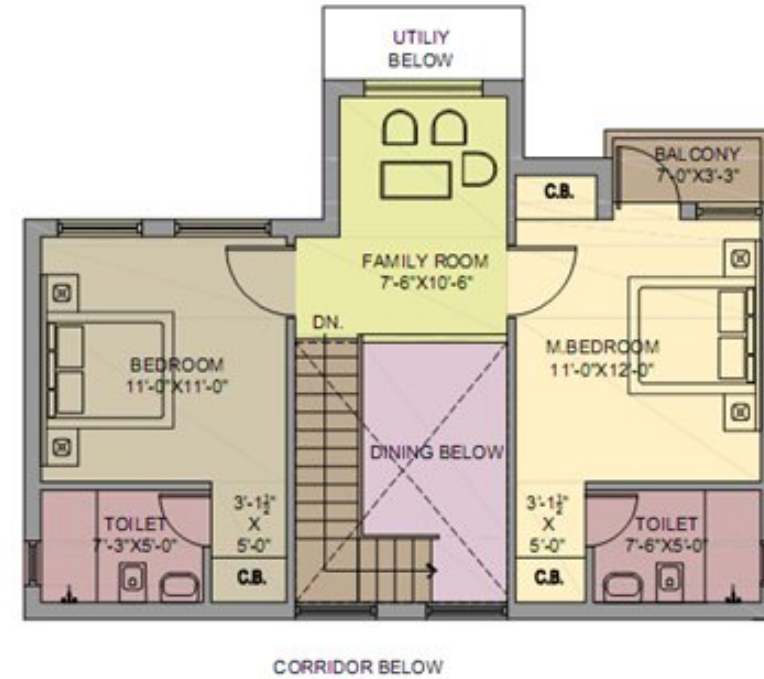
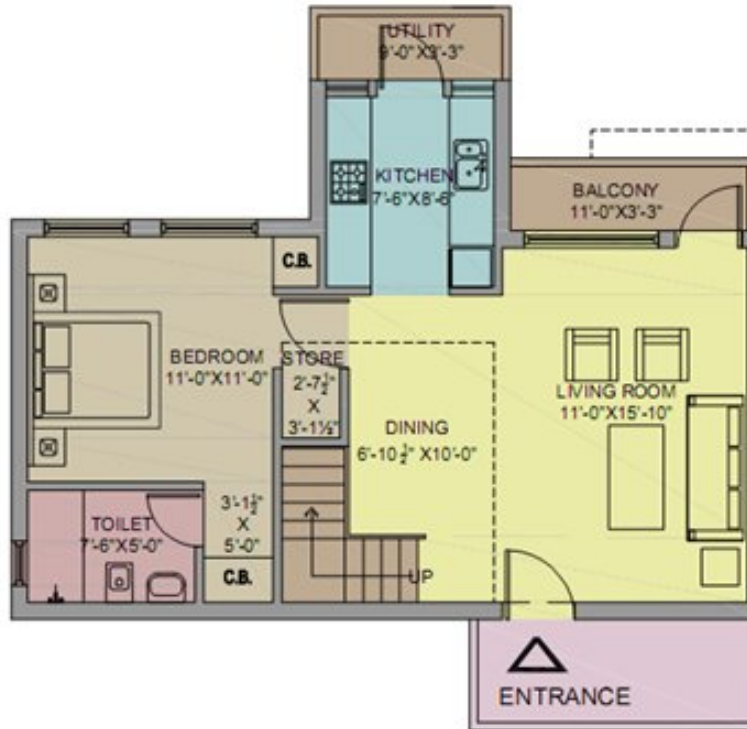
PARAS TIEREA



PARAS TIAREA

F-TYPE

SUPER AREA = 1660 SFT  
3BHK SIMPLEX UNIT



LOWER LEVEL PLAN

UPPER LEVEL PLAN

PARAS TIAREA

G-TYPE

SUPER AREA= 1725.00 SQ.FT  
3BHK DUPLEX UNIT

## PARAS TIEREA TOWER 24 PRICE LIST

### HIGH RISE APARTMENTS

### PRICE LIST

Floor	Construction Link Plan (CLP) Rs/sqft
Ground	3510
1 <sup>st</sup> to 4 <sup>th</sup> Floor	3460
5 <sup>th</sup> to 7 <sup>th</sup> Floor	3420
8 <sup>th</sup> to 10 <sup>th</sup> Floor	3380
11 <sup>th</sup> Floor Onwards	3340

#### Other Charges

1. Lease Rent @ Rs 100/- Psqft
2. IFMS @ Rs. 50/- Psqft
3. Infrastructure Charges @ Rs. 200/- Psqft
4. Service tax will be payable extra
5. Cheque/ draft to be issued in favour of Paras Tierea A/c IHVPL
6. Car parking @ Rs. 2 Lakh

Note: No EMI till 24 months.

## PRICE LIST TOWER 25 PARAS TIEREA

HIGH RISE APARTMENTS	
Floor	Construction Link Plan (CLP) Rs/sqft
Ground	3440
1 <sup>st</sup> to 7 <sup>th</sup> Floor	3415
8 <sup>th</sup> to 14 <sup>th</sup> Floor	3390
15 <sup>th</sup> to 21 <sup>th</sup> Floor	3365
22 <sup>nd</sup> Floor to 27 <sup>th</sup> Floor	3340

### Other Charges

- |   |                                      |
|---|--------------------------------------|
| 1. Lease Rent @ Rs 100/- Psqft                                    | 7. Car parking @ Rs. 2 Lakh          |
| 2. IFMS @ Rs. 50/- Psqft  |                                      |
| 3. Infrastructure Charges @ Rs. 200/- Psqft                       |                                      |
| 4. Corner PLC @ Rs. 30/- Psqft                                    | Landscape PLC @ Rs. 50/- Psqft       |
| # Corner PLC : Unit No. 1, 2, 5, 6                                | # Landscape PLC: Unit No. 2, 3, 4, 5 |
| 5. Service tax will be payable extra                              |                                      |
| 6. Cheque/ draft to be issued in favour of Paras Tieria A/c IHVPL |                                      |

**Note: No EMI till 24 months.**

TOWER 26 COST SHEET							
CONSTRUCTION LINKED PLAN							
AREA	RATE	GROUND	2,4,6,8	10, 12, 14	16 TO 26		
		3490	3440	3390	3340		
1725		6020250	5934000	5847750	5761500		
Unit No 1 and 2 having landscape PLC of Rs. 50/- PSF							
CONSTRUCTION LINKED PLAN							
AREA	GROUND	1 TO 4	5 TO 8	9 TO 12	13 TO 16	17 TO 20	21st to 27
	3515	3465	3440	3415	3390	3365	3340
1660	5834900	5751900	5710400	5668900	5627400	5585900	5544400
Notes:							
Other Charges							
1. Lease Rent@ Rs 100/- Psqft							
2. IFMS @ Rs. 50/- Psqft							
3. Infrastructure Charges @ Rs. 200/- Psqft							
4. Service tax will be payable extra							
5. Cheque/ draft to be issued in favour of Paras Tiera A/c IHVPL							
6. Car parking @ Rs. 2 Lakh							

**Note: No EMI till 24 months.**

<b>PAYMENT PLAN FOR PARAS TIEREA</b>	
<b>Construction Linked Payment Plan</b>	
<b>On Application for Booking</b>	<b>10%</b>
<b>Within 45 days from Allotment</b>	<b>10%</b>
<b>At the time of start of excavation</b>	<b>10%</b>
<b>On completion of 2nd Floor roof slab</b>	<b>10%+50% of PLC</b>
<b>On completion of 4th Floor roof slab</b>	<b>10%</b>
<b>On completion of 8th Floor roof slab</b>	<b>7.50%+50% LEASE RENT+50% IDC</b>
<b>On completion of 10th Floor roof slab</b>	<b>7.5% + 50% PLC</b>
<b>On completion of Top Floor roof slab</b>	<b>7.50%</b>
<b>On completion of Brick work</b>	<b>7.50%+50% LEASE RENT+50% IDC</b>
<b>On completion of Electrical Conduiting &amp; wiring</b>	<b>7.50%</b>
<b>On completion of Plumbing work</b>	<b>7.50%</b>
<b>At the time of notice of possession</b>	<b>5%+100% IFMS</b>





## SUMANGALAM PROPMART PVT. LTD.

F 27 / 28, Sector - 18 , Noida

Mobile : +91 9560598800/01

Toll free : 1800 - 103 - 7707

SMS <HOME> to 53030

Email : [info@sumangalampropmart.com](mailto:info@sumangalampropmart.com)

Website : [www.sumangalampropmart.com](http://www.sumangalampropmart.com)