



*Exclusivity is  
something you have earned.  
So enjoy it!*

*Welcome to your dream home at*



Sec-137, Expressway, Noida  
Studio/Low Rise/High Rise Apartments



Paras Buildtech India Pvt. Ltd.



*A home your heart desires!*

Sec-137, Expressway Noida

An ISO 9001:2000 company



**SUMANGALAM**

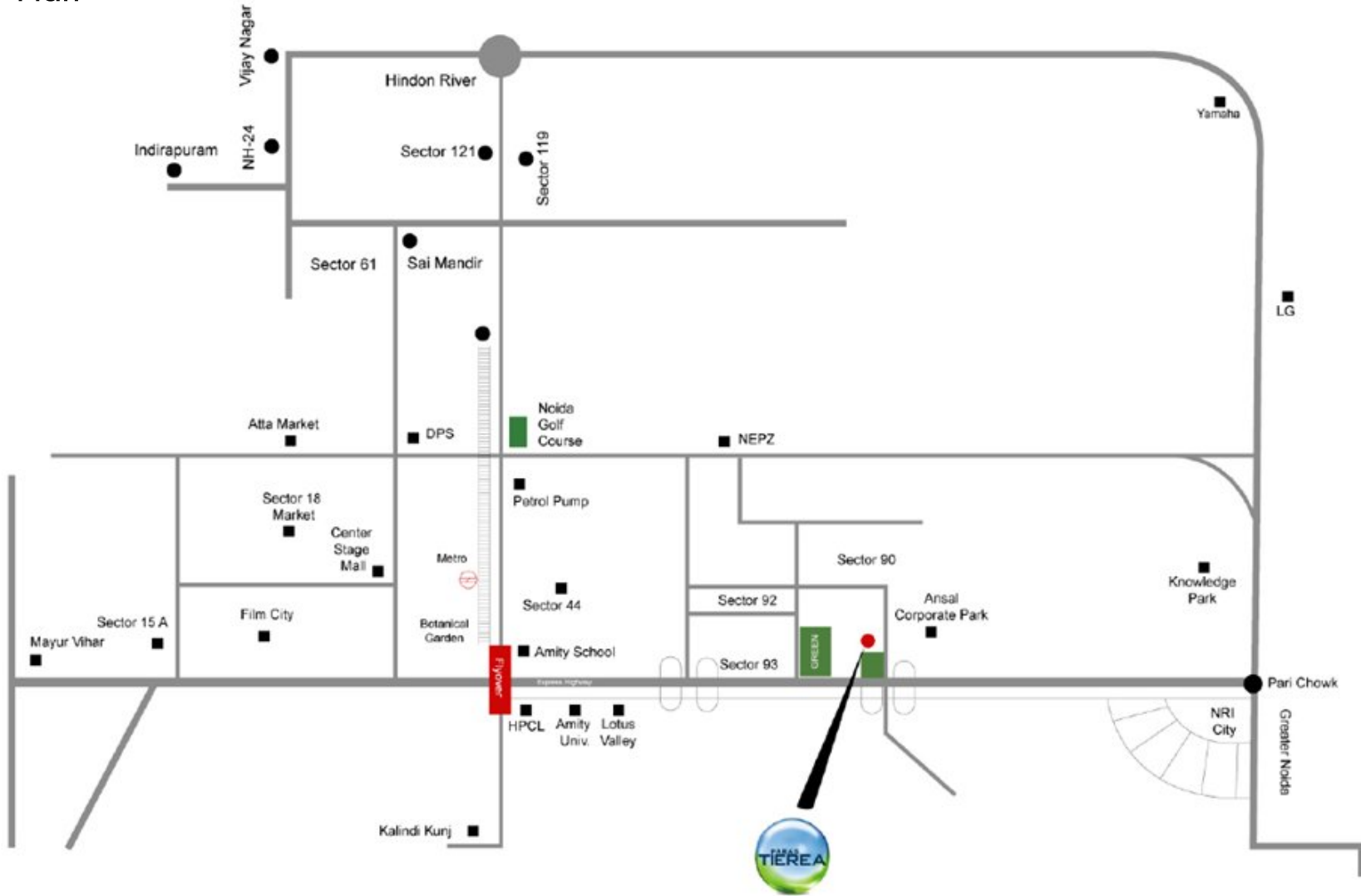
Your Home Planners



Paras Tieria  
*Relax! Welcome Home!*

**3 BHK Simplex & Duplex Apartments**

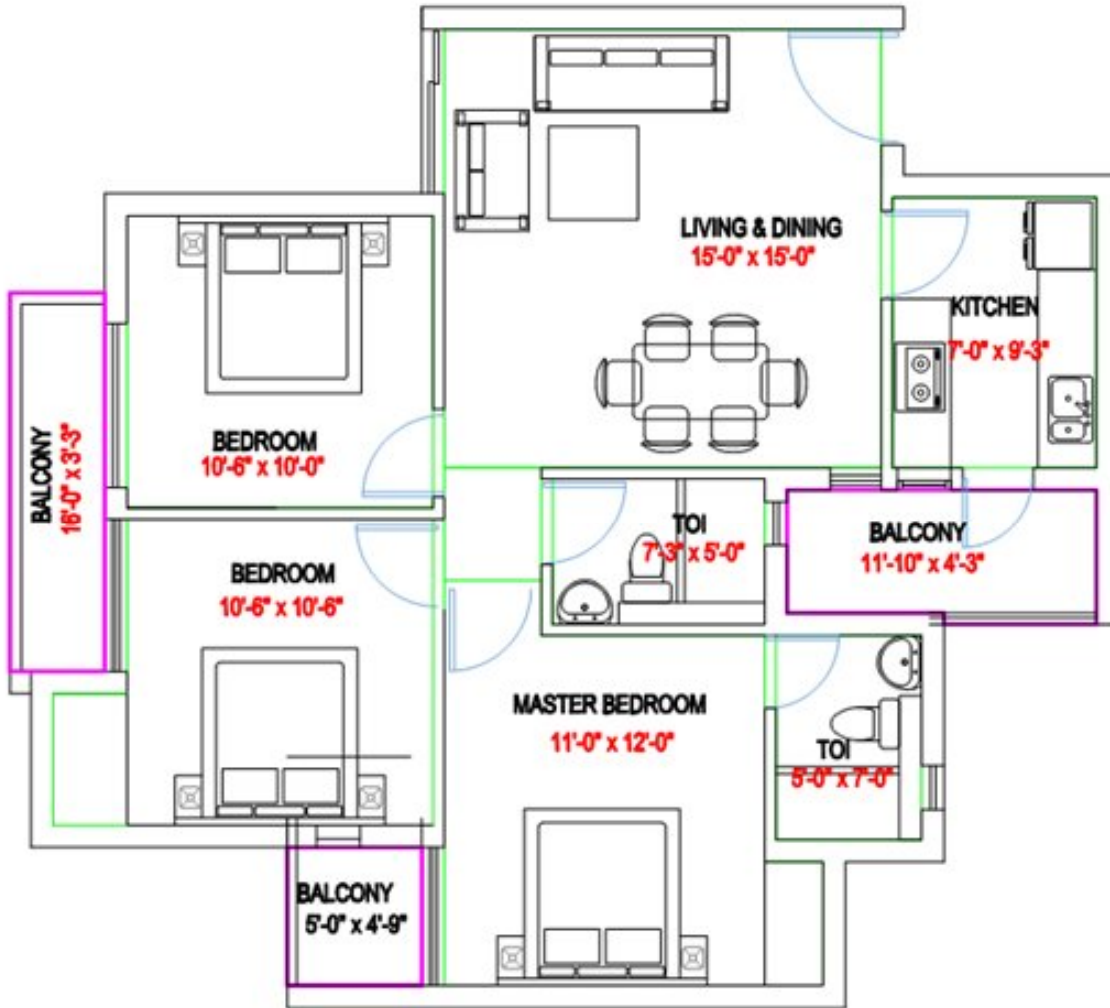
# Location Plan



# Site Plan



Floor Plan

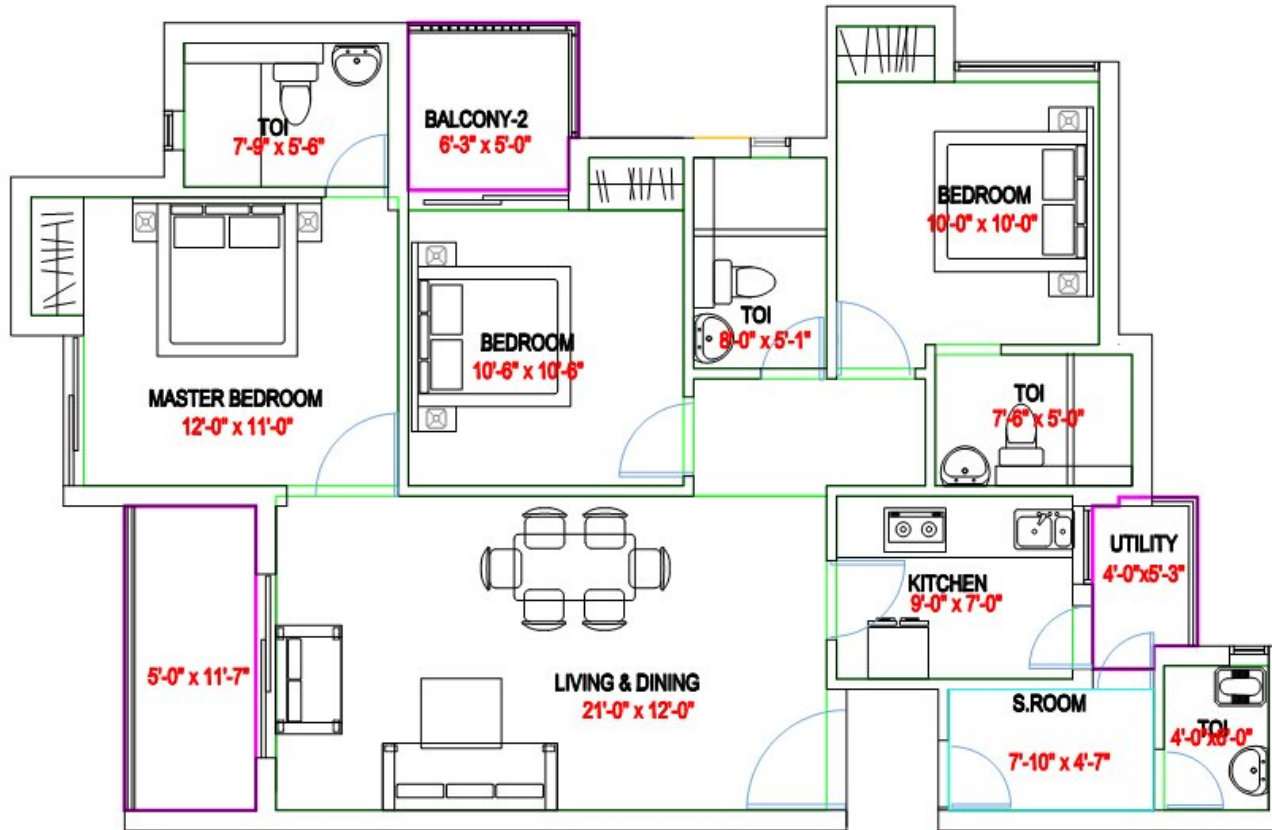


**3 BHK (TYPE-1)**

**SUPER BUA= 1330 SQ.FT.**

NOTE : THE LAYOUT PLAN AND THE AREAS ARE TENTATIVE AND SUBJECT TO VARIATIONS AND MODIFICATIONS AT THE SOLE DISCRETION OF THE COMPANY  
 1 SQ.MT = 10.764 SQ.FT

# Floor Plan



**3 BHK (TYPE-2)**

**SUPER BUA= 1565 SQ.FT.**

NOTE : THE LAYOUT PLAN AND THE AREAS ARE TENTATIVE AND SUBJECT TO VARIATIONS AND MODIFICATIONS AT THE SOLE DISCRETION OF THE COMPANY  
 1 SQ.MT = 10.764 SQ.FT

**PARAS TIEREA**

# Floor Plan



**UNIT TYPE- D (3BHK+3 TOILETS+SERVANT ROOM+UTILITY)**  
**SUPER AREA = 1592 sqft**

PARAS TIEREA

NOTE: THE LAYOUT PLAN AND THE AREAS ARE TENTATIVE AND SUBJECT TO VARIATIONS AND MODIFICATIONS AT THE SOLE DISCRETION OF THE COMPANY

# Floor Plan

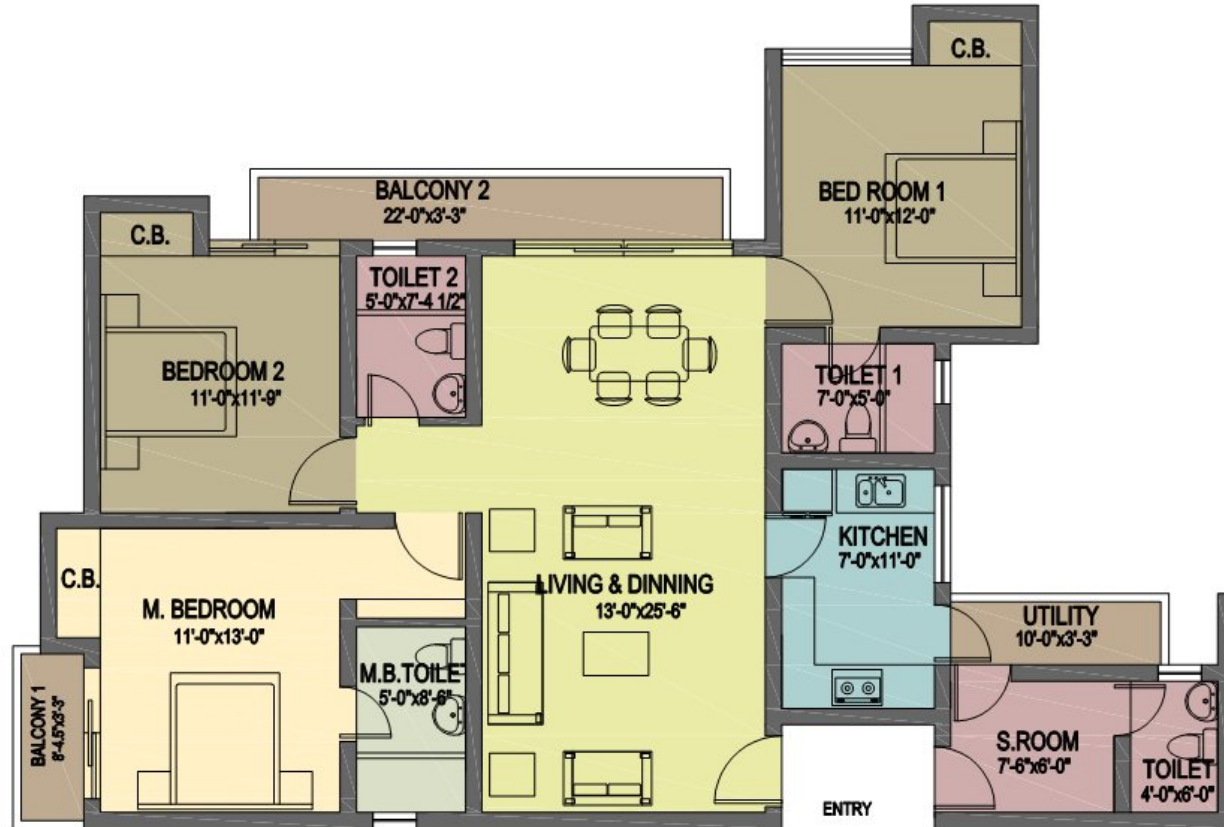


PARAS TIEREA

F-TYPE

SUPER AREA = 1660 SFT  
3BHK SIMPLEX UNIT

# Floor Plan



**UNIT TYPE-E (3BHK+4 TOILETS+SERVANT ROOM+UTILITY)**  
**SUPER AREA = 1695 sqft**

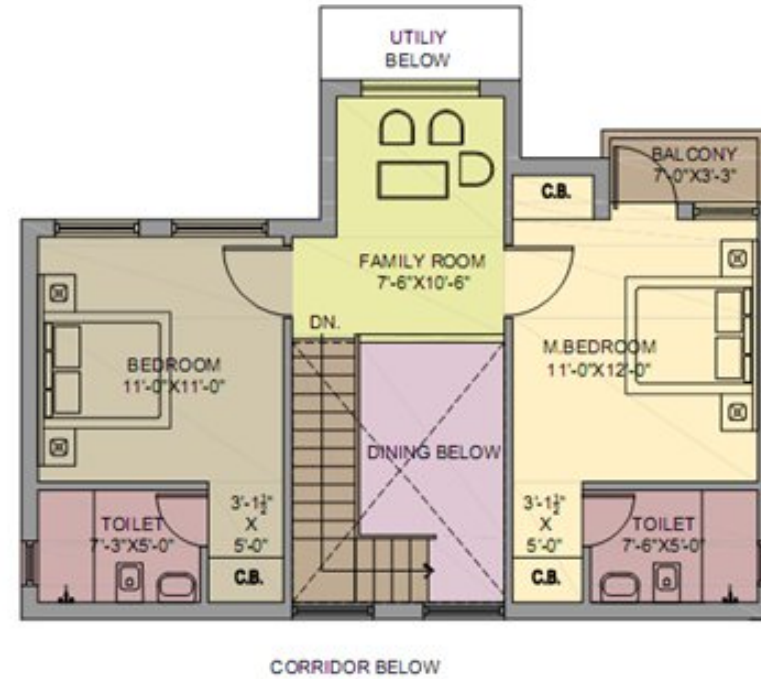
NOTE : THE LAYOUT PLAN AND THE AREAS ARE TENTATIVE AND SUBJECT TO VARIATIONS AND MODIFICATIONS AT THE SOLE DISCRETION OF THE COMPANY

PARAS TIEREA

Floor Plan



LOWER LEVEL PLAN



UPPER LEVEL PLAN

PARAS TIAREA

G-TYPE

SUPER AREA= 1725.00 SQ.FT  
3BHK DUPLEX UNIT

## PARAS TIAREA TOWER 24 PRICE LIST

### HIGH RISE APARTMENTS

#### PRICE LIST

Floor	Construction Link Plan (CLP) Rs/sqft	Down Payment (DP)	Rs/sqft
Ground	3360	3160	
1 <sup>st</sup> to 4 <sup>th</sup> Floor	3310	3110	
5 <sup>th</sup> to 7 <sup>th</sup> Floor	3270	3070	
8 <sup>th</sup> to 10 <sup>th</sup> Floor	3230	3030	
11 <sup>th</sup> Floor Onwards	3190	2990	

#### Other Charges

1. Lease Rent@ Rs 100/- Psqft
2. IFMS @ Rs. 50/- Psqft
3. Infrastructure Charges @ Rs. 200/- Psqft
4. Service tax will be payable extra
5. Cheque/ draft to be issued in favour of Paras Tiera A/c IHVPL

## PRICE LIST TOWER 25 PARAS TIAREA

HIGH RISE APARTMENTS		
Floor	Construction Link Plan (CLP) Rs/sqft	Down Payment (DP) Rs/sqft
Ground	3290	3090
1 <sup>st</sup> to 7 <sup>th</sup> Floor	3265	3065
8 <sup>th</sup> to 14 <sup>th</sup> Floor	3240	3040
15 <sup>th</sup> to 21 <sup>th</sup> Floor	3215	3015
22 <sup>nd</sup> Floor to 27 <sup>th</sup> Floor	3190	2990

### Other Charges

1. Lease Rent @ Rs 100/- Psqft

2. IFMS @ Rs. 50/- Psqft

3. Infrastructure Charges @ Rs. 200/- Psqft

4. Corner PLC @ Rs. 30/- Psqft

Landscape PLC @ Rs. 50/- Psqft

# Corner PLC : Unit No. 1, 2, 5, 6

# Landscape PLC: Unit No. 2, 3, 4, 5

5. Service tax will be payable extra

6. Cheque/ draft to be issued in favour of Paros Tiera A/c IHVPL

TOWER 26 COST SHEET							
CONSTRUCTION LINKED PLAN							
AREA	RATE	GROUND	2,4,6,8	10, 12, 14	16 TO 26		
		3340	3290	3240	3190		
1725		5761500	5675250	5589000	5502750		
DOWN PAYMENT PLAN							
AREA	RATE	GROUND	2,4,6,8	10, 12, 14	16, 18, 20		
		3140	3090	3040	2990		
1725		5416500	5330250	5244000	5157750		
Unit No 1 and 2 having landscape PLC of Rs. 50/- PSF							
CONSTRUCTION LINKED PLAN							
AREA	GROUND	1 TO 4	5 TO 8	9 TO 12	13 TO 16	17 TO 20	21st to 27
	3365	3315	3290	3265	3240	3215	3190
1660	5585900	5502900	5461400	5419900	5378400	5336900	5295400
DOWN PAYMENT PLAN							
AREA	GROUND	1 TO 4	5 TO 8	9 TO 12	13 TO 16	17 TO 20	21st
	3165	3115	3090	3065	3040	3015	2990
1660	5253900	5170900	5129400	5087900	5046400	5004900	4963400
Notes:							
Other Charges							
1. Lease Rent@ Rs 100/- Psqft							
2. IFMS @ Rs. 50/- Psqft							
3. Infrastructure Charges @ Rs. 200/- Psqft							
4. Service tax will be payable extra							
5. Cheque/ draft to be issued in favour of Paras Tiera A/c IHVPL							

## PAYMENT PLAN FOR PARAS TIÉREA

### Down Payment Plan

On Application for Booking	10%
Within 45 days from Allotment	85%+LEASE RENT+100% PLC+100% IDC
At the time of notice of possession	5%+IFMS

### Construction Linked Payment Plan

On Application for Booking	10%
Within 45 days from Allotment	10%
At the time of start of excavation	10%
On completion of 2nd Floor roof slab	10%+50% of PLC
On completion of 4th Floor roof slab	10%
On completion of 8th Floor roof slab	7.50%+50% LEASE RENT+50% IDC
On completion of 10th Floor roof slab	7.5% + 50% PLC
On completion of Top Floor roof slab	7.50%
On completion of Brick work	7.50%+50% LEASE RENT+50% IDC
On completion of Electrical Conduiting & wiring	7.50%
On completion of Plumbing work	7.50%
At the time of notice of possession	5%+100% IFMS



## SUMANGALAM PROPMART PVT. LTD.

F 27 / 28, Sector - 18 , Noida

Mobile : +91 9560598800/01

Toll free : 1800 - 103 - 7707

SMS <HOME> to 53030

Email : [info@sumangalampropmart.com](mailto:info@sumangalampropmart.com)

Website : [www.sumangalampropmart.com](http://www.sumangalampropmart.com)