



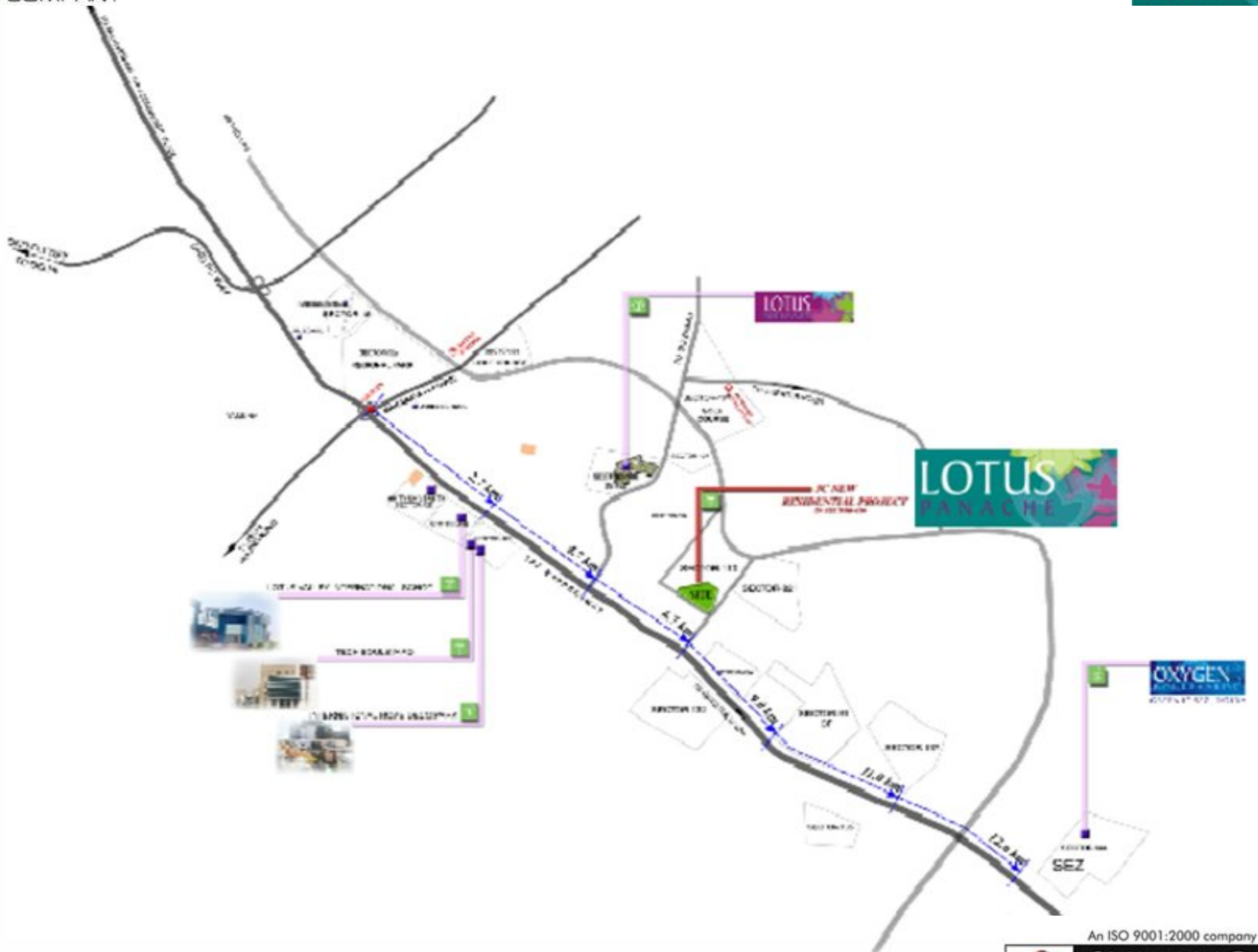
**2/3/4 BHK Apartments @ Sector -110 , Noida**

## THE 3C COMPANY

- The 3C Company's Project Spectrum
  - Platinum Rated LEED Certified Green Building by USGBC
    - WIPRO Campus, Gurgaon – Year 2004
    - PATNI Campus, Noida – Year 2008
    - GREEN BOULEVARD, Noida – Year 2009
  - Gold Rated LEED Certified Green Building by USGBC
    - WIPRO Campus, Greater Noida – 2009
    - SPECTRAL Services, Hyderabad – 2009
  - Others
    - Lotus Boulevard and Lotus Boulevard Espacia, Noida – India's Largest Green Residential Estate
    - Tech Boulevard, Noida
    - Knowledge Boulevard, Noida
    - CSC Campus, Noida
    - Lotus Valley School, Noida
    - Lotus Valley School, Greater Noida
    - Oxygen Boulevard, Noida
    - IHDP

| AREA            | WALL                              | FLOOR                                | DOORS          |                | WINDOW           | SANITARY WARE       |   |
|-----------------|-----------------------------------|--------------------------------------|----------------|----------------|------------------|---------------------|---|
|                 |                                   |                                      | FINISH         | HARDWARE       |                  | FIXTURES            | FITTINGS  |
| LIVING & DINING | Oil Bound Distemper               | High End Vitrified Tiles             | Veneered Door  | Dorset         | Aluminium Window |                     |   |
| PASSAGE         | Oil Bound Distemper               | High End Vitrified Tiles             |                |                | Aluminium Window |                     |   |
| BEDROOMS        | Oil Bound Distemper               | Laminated Wooden Flooring (Imposted) | Skin door      | Dorset         | Aluminium Window |                     |   |
| TOILETS         | Ceramic Tile cladded upto ceiling | Ceramic Tile                         | Skin door      | Dorset         | Aluminium Window | Wash basin and WC   | Single lever fittings in master toilet and quarter ton fitting in other toilets |
| KITCHEN         | Ceramic Tile cladded upto ceiling | Ceramic Tile                         | Skin door      | Dorset         | Aluminium Window | SS Sink Double Bowl | Granite Counter and CP fittings   |
| UTILITY         | External Paint                    | Ceramic Tile                         | Aluminium Door | As per section | Aluminium Window |                     |   |
| BALCONIES       | External Paint                    | Paved tile                           | Aluminium Door | As per section | Aluminium Window |                     |   |
| SERVANT TOILET  | Oil Bound Distemper               | Ceramic Tile                         | Aluminium Door | As per section | Aluminium Window | Indian Style        |   |

Note : All CP Fittings of Jaguar or equivalent. brand . VIDEO DOOR PHONE to be provided for added security





PARK  
A=14000 SQM

N. HOME  
A=2000 SQM



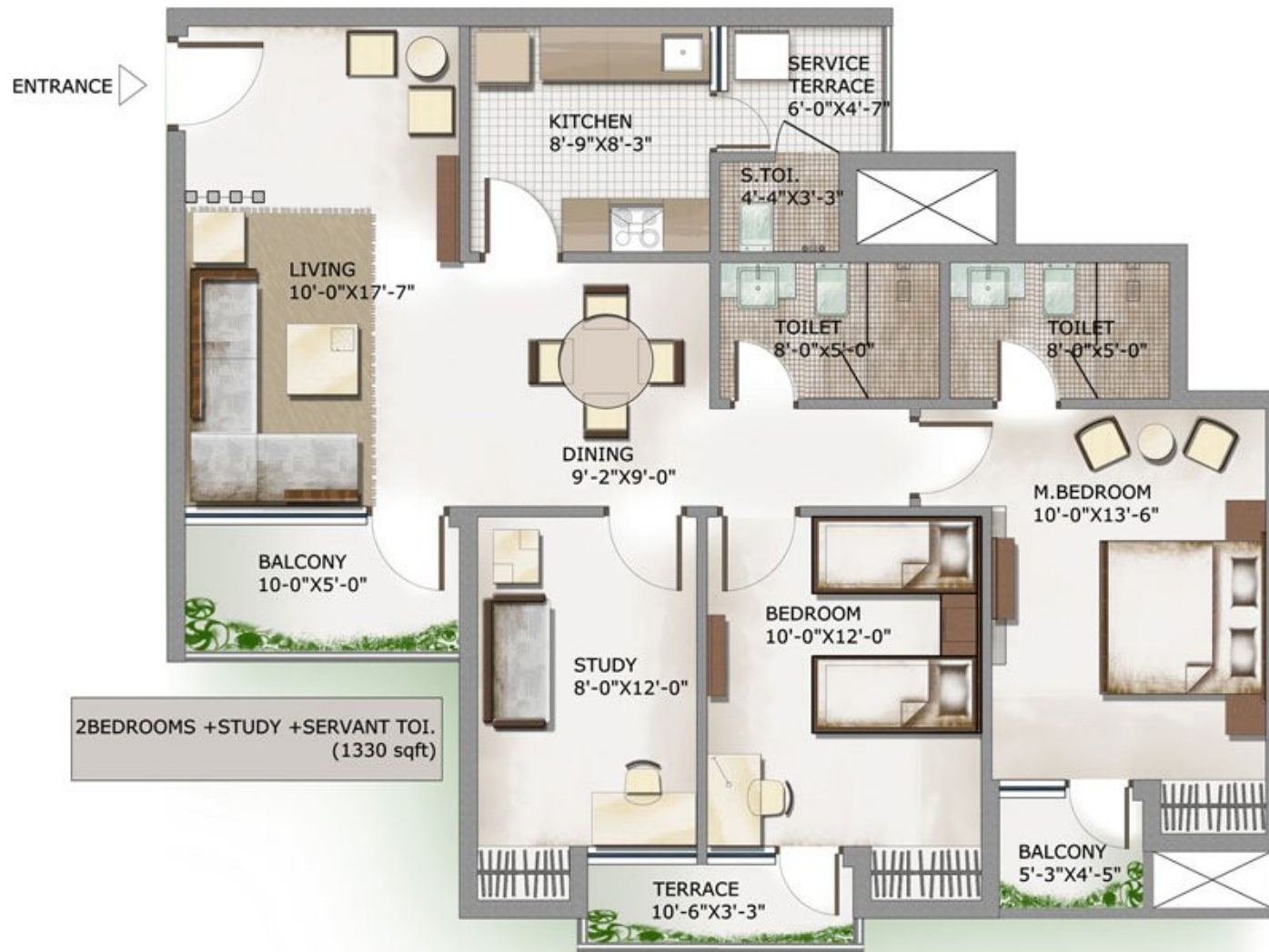
45.0M WIDE ROAD

GROUP HOUSING  
PLOT AREA=164120 SQM

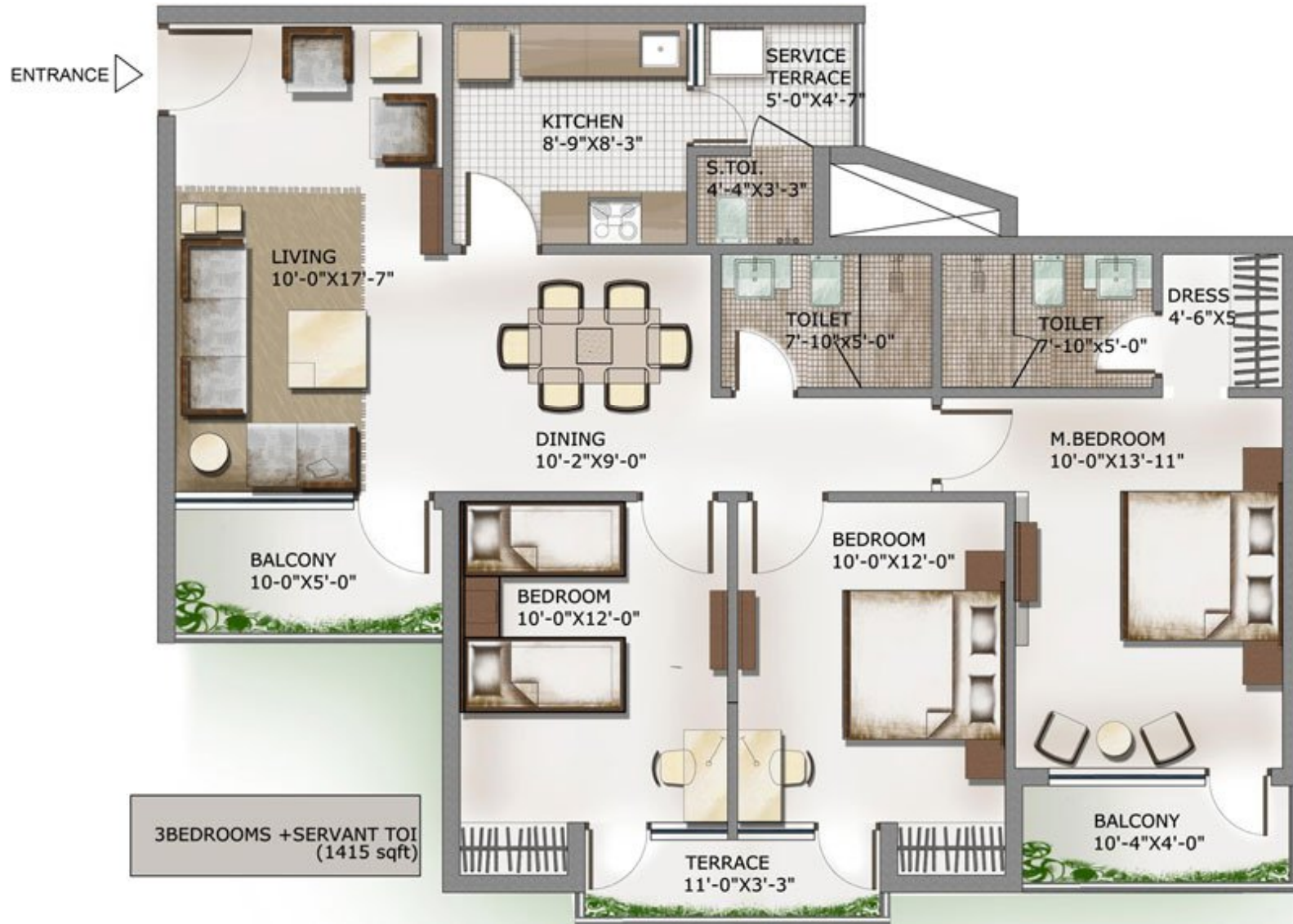
## Floor Plan - 1130 sqft.



## Floor Plan - 1330 sqft.



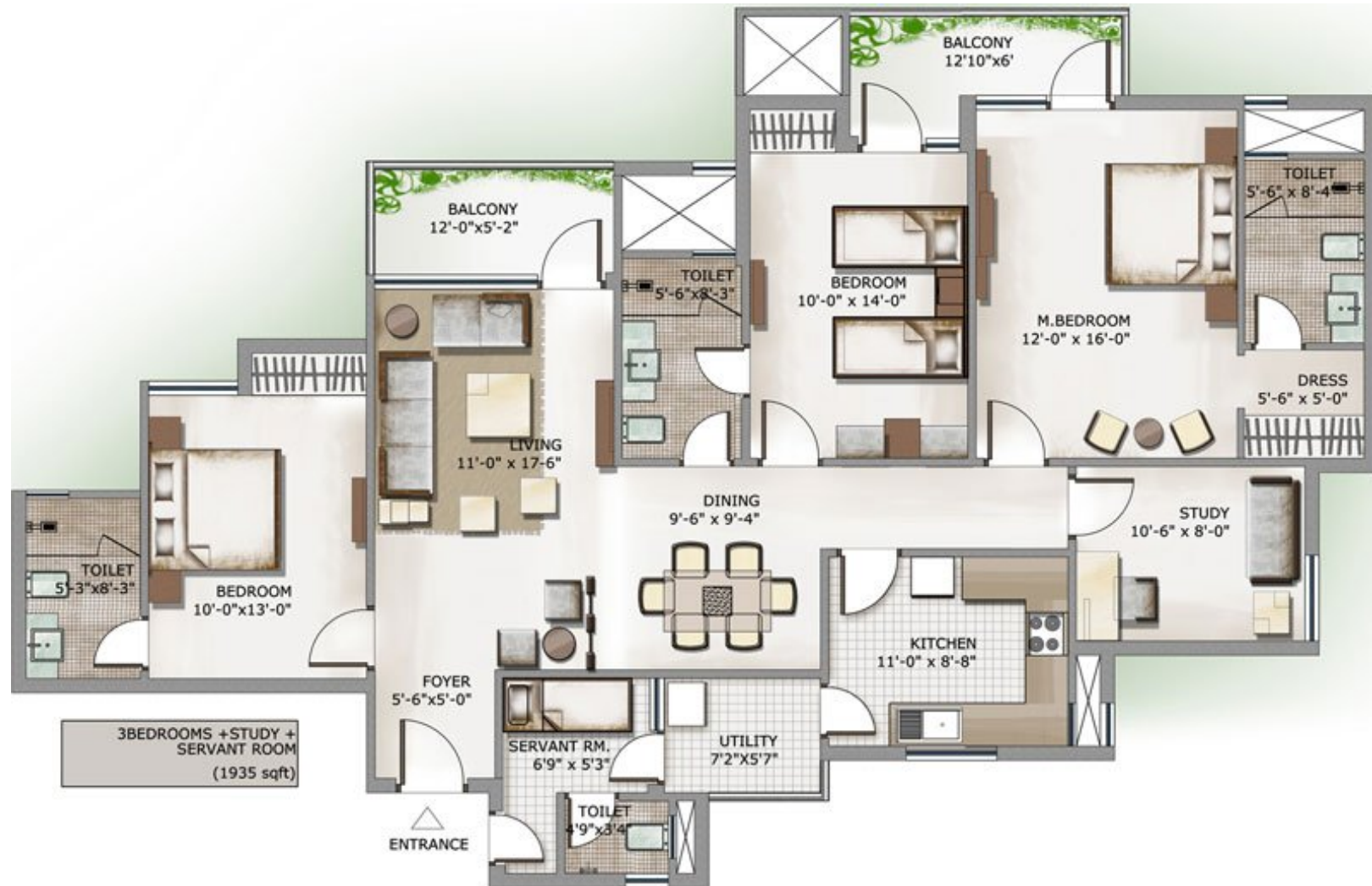
## Floor Plan – 1415 sqft.



## Floor Plan - 1579 sqft.



## Floor Plan - 1935 sqft.



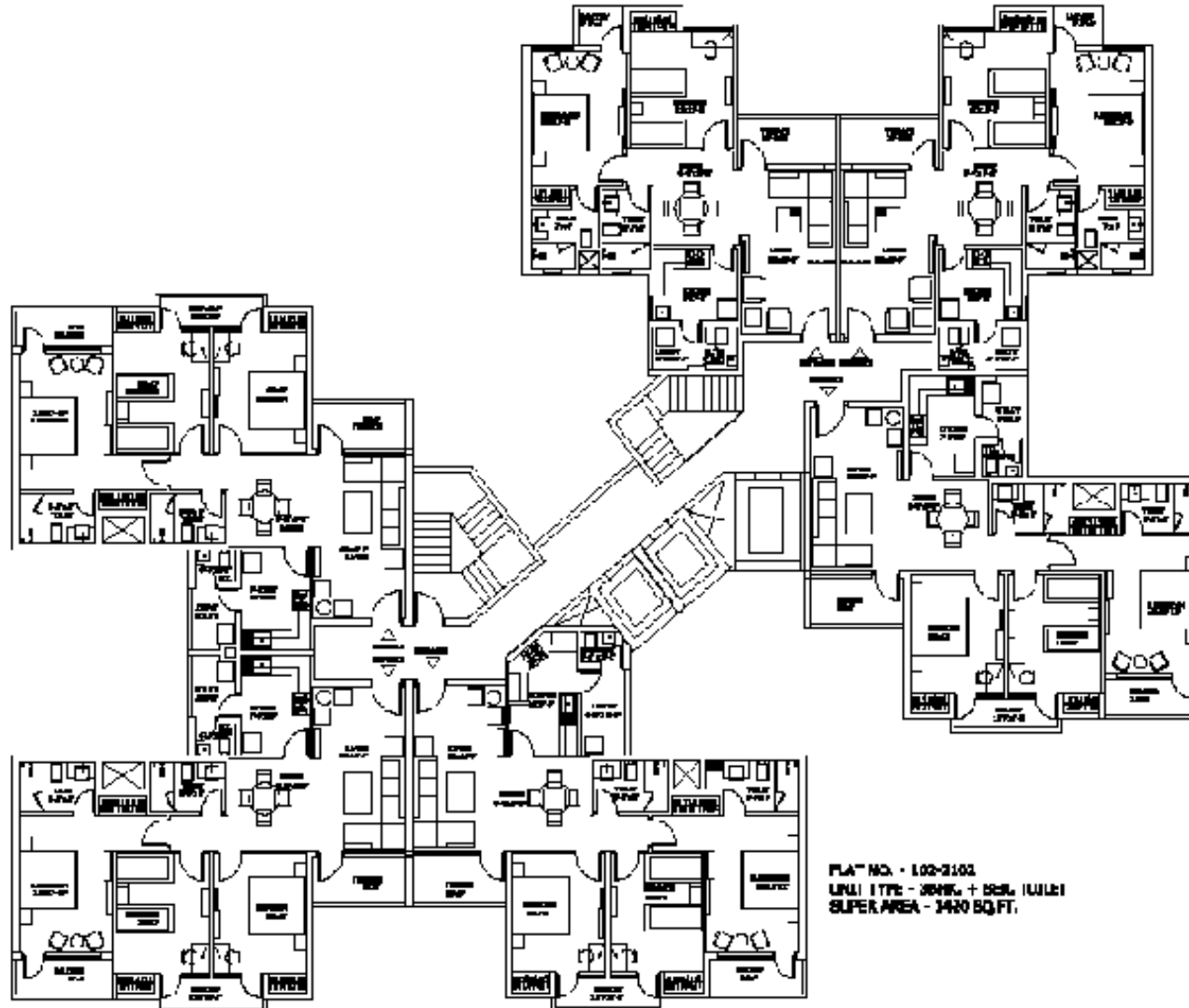
# Floor Plan - 1955 sqft.



FLAT NO. - 104-2104  
UNIT TYPE - 2BHK + SER. TOILET  
SUPER AREA - 1409 SQ. FT.

FLAT NO. - 105-2105  
UNIT TYPE - 2BHK + SER. TOILET  
SUPER AREA - 1122 SQ. FT.

FLAT NO. - 106-2106  
UNIT TYPE - 2BHK + SER. TOILET  
SUPER AREA - 1122 SQ. FT.



FLAT NO. - 101-2101  
UNIT TYPE - 2BHK + SER. TOILET  
SUPER AREA - 1409 SQ. FT.

FLAT NO. - 103-2103  
UNIT TYPE - 2BHK + SER. TOILET  
SUPER AREA - 1409 SQ. FT.

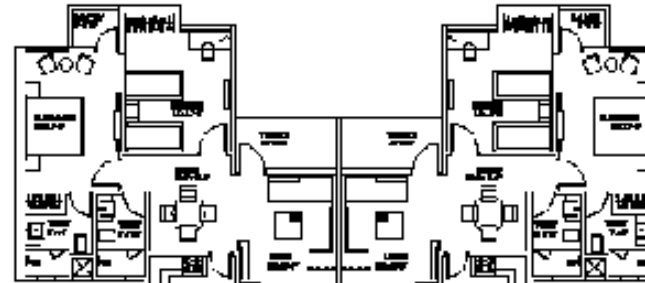
FLAT NO. - 102-2102  
UNIT TYPE - 2BHK + SER. TOILET  
SUPER AREA - 1420 SQ. FT.



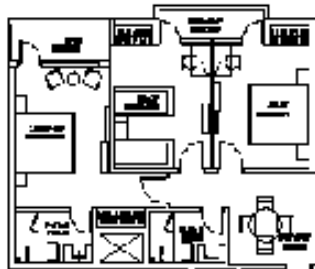
# BLOCK - 1

FLAT NO. 105 2105  
UNIT TYPE - 2BHK + SER. TOILET  
SUPER AREA - 1122 SQ.FT.

FLAT NO. 906 2106  
UNIT TYPE - 2BHK + SER. TOILET  
SUPER AREA - 1122 SQ.FT.



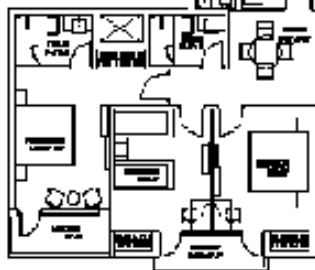
FLAT NO. - 104 2104  
UNIT TYPE - 2BHK + SER. TOILET  
SUPER AREA - 1409 SQ.FT.



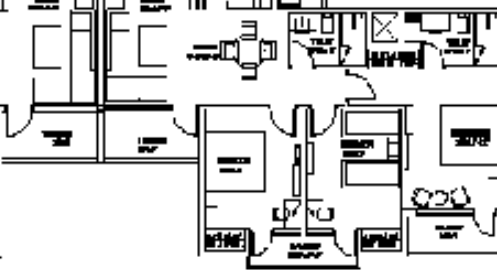
FLAT NO. - 101 2101  
UNIT TYPE - 2BHK + SER. TOILET  
SUPER AREA - 1409 SQ.FT.



FLAT NO. - 102 2102  
UNIT TYPE - 2BHK + SER. TOILET  
SUPER AREA - 1409 SQ.FT.



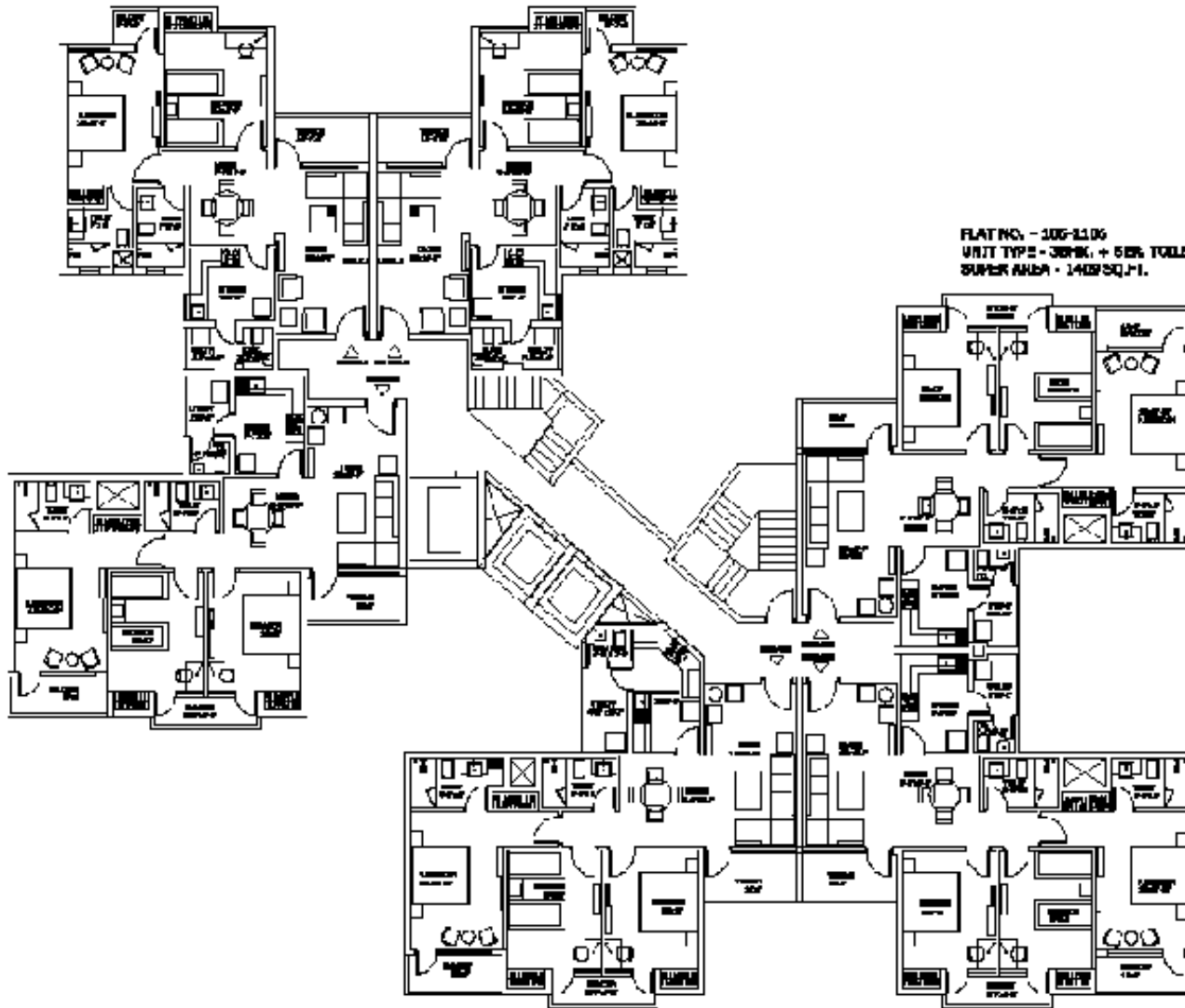
FLAT NO. - 103 2103  
UNIT TYPE - 2BHK + SER. TOILET  
SUPER AREA - 1409 SQ.FT.



# BLOCK -2

FLAT NO. - 104-2104  
UNIT TYPE - 2BHK. + SER. TOILET  
SUPER AREA - 1122 SQ.FT.

FLAT NO. - 103-2103  
UNIT TYPE - 2BHK. + SER. TOILET  
SUPER AREA - 1122 SQ.FT.



FLAT NO. - 105-2105  
UNIT TYPE - 3BHK. + SER. TOILET  
SUPER AREA - 1403 SQ.FT.

FLAT NO. - 102-2102  
UNIT TYPE - 3BHK. + SER. TOILET  
SUPER AREA - 1486 SQ.FT.

FLAT NO. - 101-2101  
UNIT TYPE - 3BHK. + SER. TOILET  
SUPER AREA - 1409 SQ.FT.

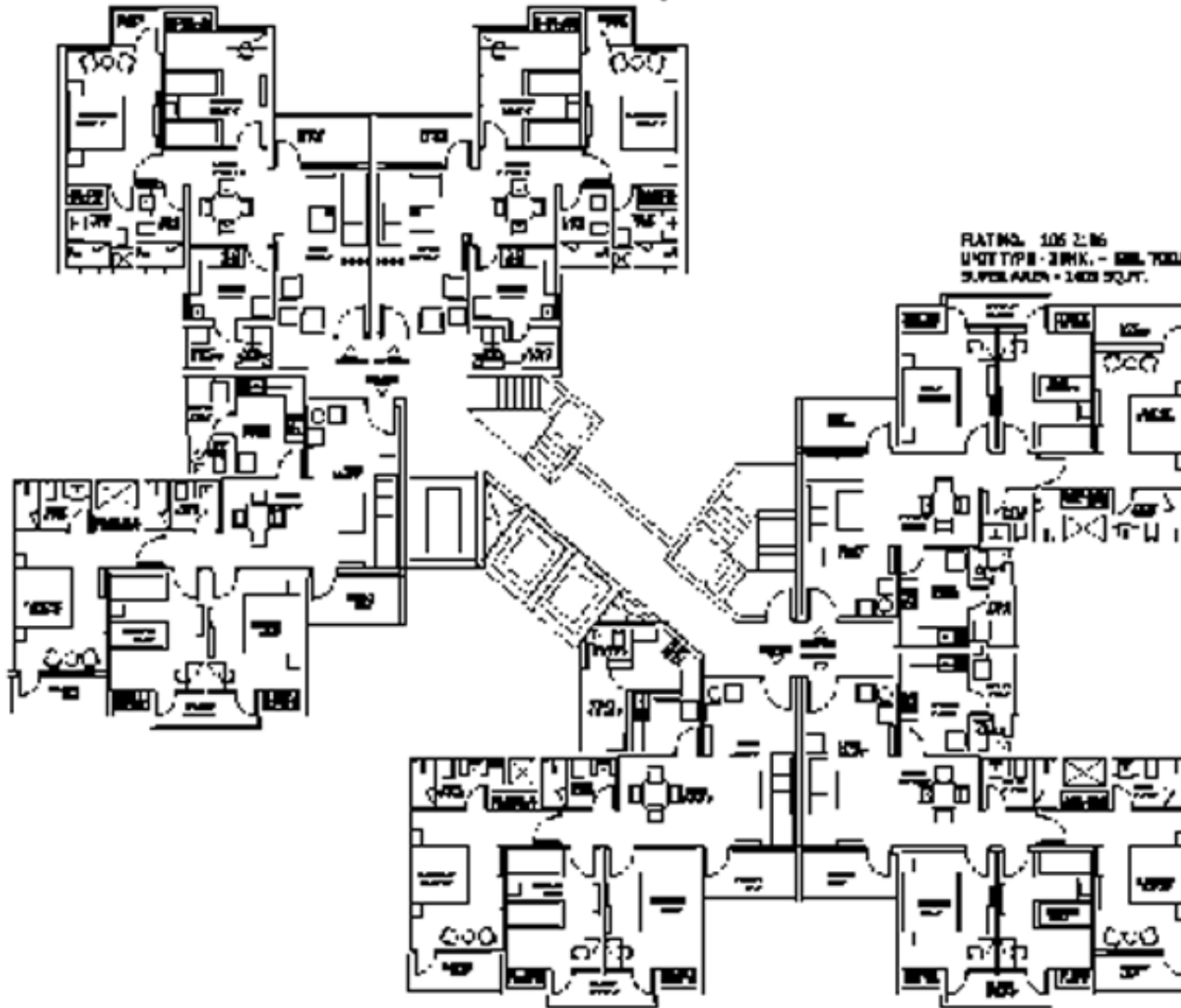
FLAT NO. - 302-2102  
UNIT TYPE - 3BHK. + SER. TOILET  
SUPER AREA - 1430 SQ.FT.



# BLOCK -3

FLAT NO. - 104-2104  
UNIT TYPE - 2BHK + 2ER TOILET  
SUPER AREA - 1,122 SQ.FT.

FLAT NO. - 104-2103  
UNIT TYPE - 2BHK + 2ER TOILET  
SUPER AREA - 1,122 SQ.FT.



FLAT NO. - 104-2102  
UNIT TYPE - 2BHK + 2ER TOILET  
SUPER AREA - 1,488 SQ.FT.

FLAT NO. - 104-2106  
UNIT TYPE - 2BHK + 2ER TOILET  
SUPER AREA - 1,422 SQ.FT.

FLAT NO. - 104-2101  
UNIT TYPE - 2BHK + 2ER TOILET  
SUPER AREA - 1,422 SQ.FT.

FLAT NO. - 104-2105  
UNIT TYPE - 2BHK + 2ER TOILET  
SUPER AREA - 1,124 SQ.FT.



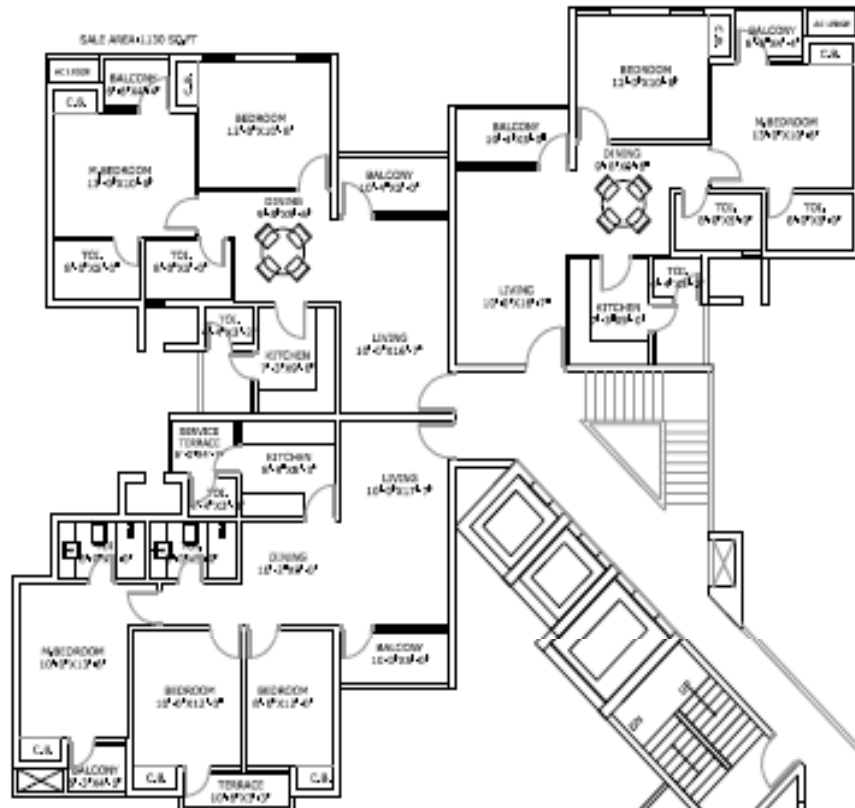
# BLOCK -4

FLAT NO. • 104-2104  
UNIT TYPE • 2BHK, + SER, TOILET  
SUPER AREA • 1130 SQ.FT.

FLAT NO. • 105-2105  
UNIT TYPE • 2BHK, + SER, TOILET  
SUPER AREA • 1130 SQ.FT.

FLAT NO. • 106-2106  
UNIT TYPE • 3BHK, + SER, TOILET  
SUPER AREA - 1300 SQ.FT.

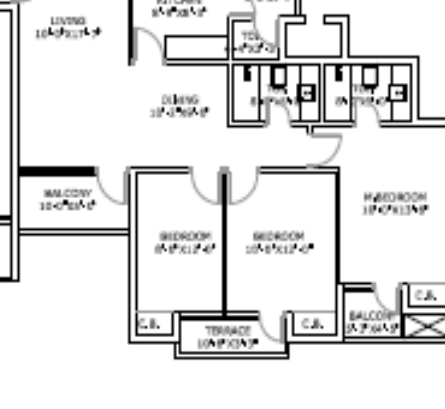
SALE AREA 1130 SQFT



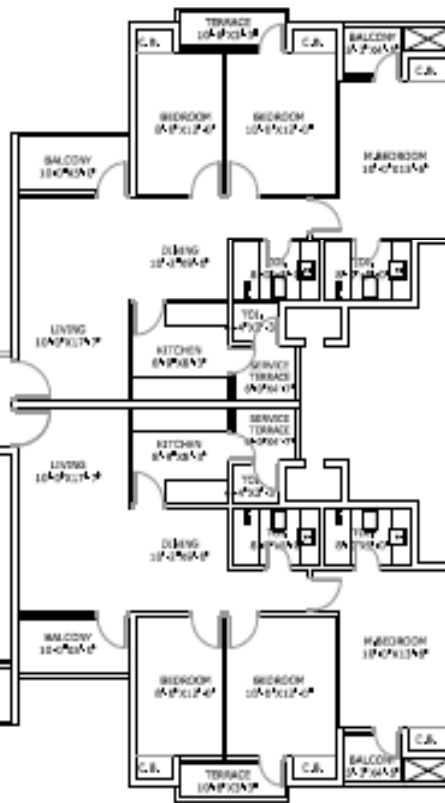
FLAT NO. • 103-2103  
UNIT TYPE • 3BHK, + SER, TOILET  
SUPER AREA - 1330 SQ.FT.



FLAT NO. • 102-2102  
UNIT TYPE • 3BHK, + SER, TOILET  
SUPER AREA • 1355 SQ.FT.



FLAT NO. • 101-2101  
UNIT TYPE • 3BHK, + SER, TOILET  
SUPER AREA • 1330 SQ.FT.

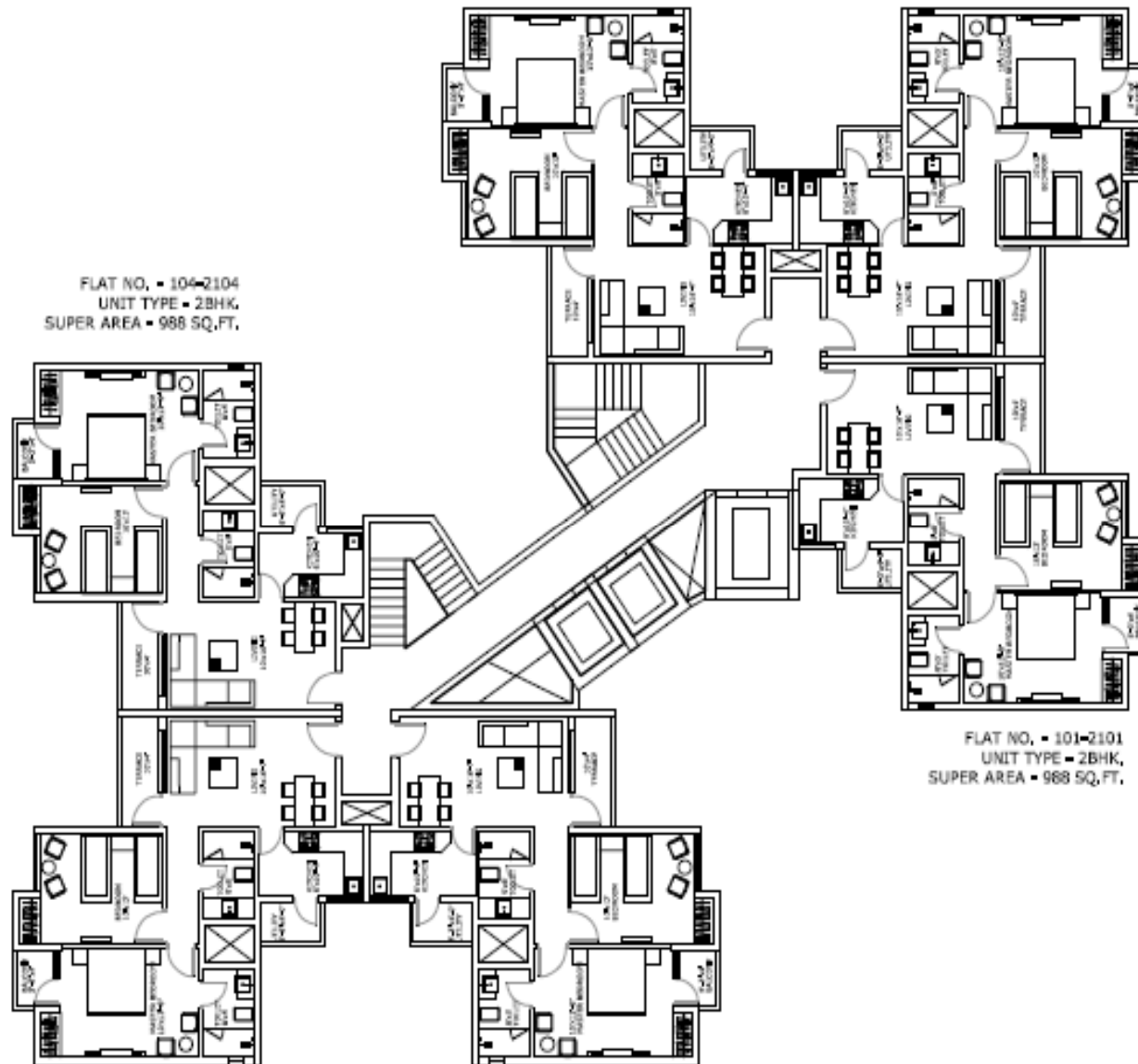


# BLOCK -7

FLAT NO. - 105-2105  
UNIT TYPE - 2BHK,  
SUPER AREA - 988 SQ.FT.

FLAT NO. - 106-2106  
UNIT TYPE - 2BHK,  
SUPER AREA - 988 SQ.FT.

FLAT NO. - 104-2104  
UNIT TYPE - 2BHK,  
SUPER AREA - 988 SQ.FT.



FLAT NO. - 101-2101  
UNIT TYPE - 2BHK,  
SUPER AREA - 988 SQ.FT.

FLAT NO. - 103-2103  
UNIT TYPE - 2BHK,  
SUPER AREA - 988 SQ.FT.

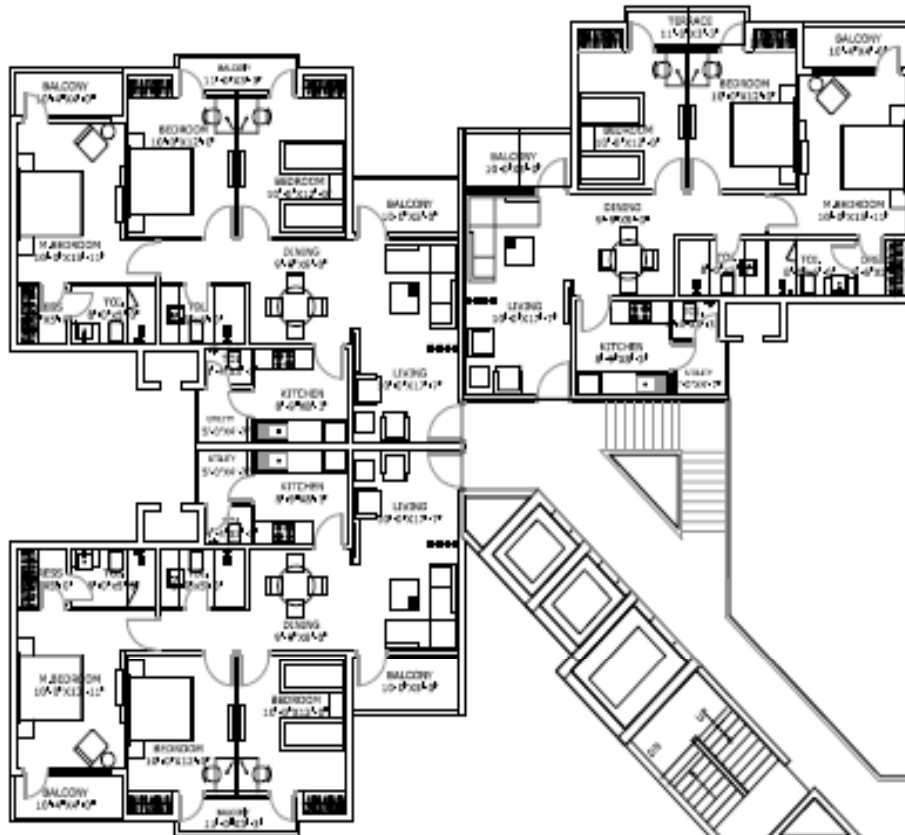
FLAT NO. - 102-2102  
UNIT TYPE - 2BHK,  
SUPER AREA - 988 SQ.FT.



# BLOCK -8

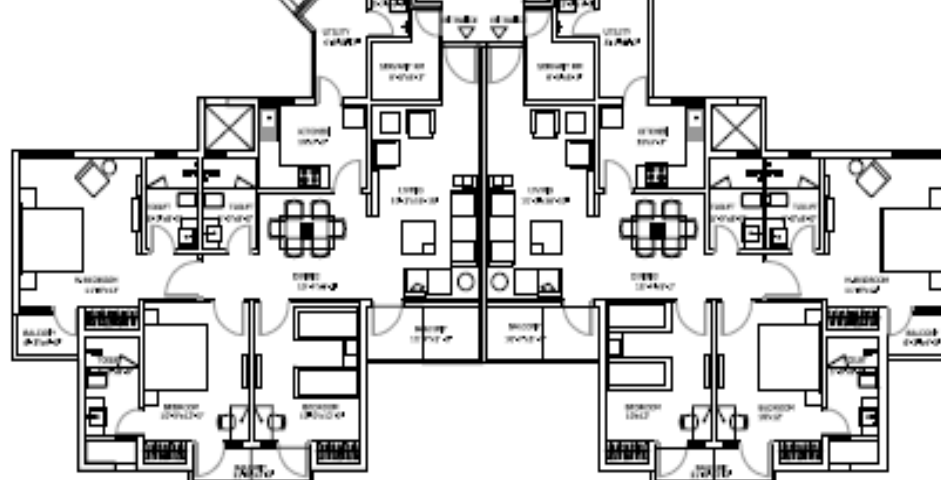
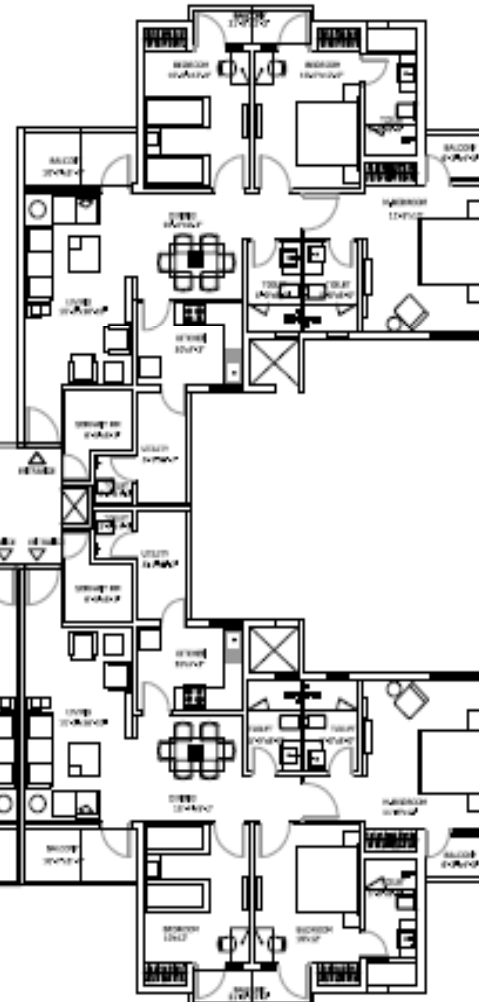
FLAT NO. - 104-2104  
 UNIT TYPE • 3BHK. + SER. TOILET  
 SUPER AREA • 1415 SQ.FT.

FLAT NO. • 105-2105  
 UNIT TYPE - 3BHK. + SER. TOILET  
 SUPER AREA - 1415 SQ.FT.



FLAT NO. • 103-2103  
 UNIT TYPE - 3BHK. + SER. TOILET  
 SUPER AREA - 1415 SQ.FT.

FLAT NO. • 106-2106  
 UNIT TYPE • 3BHK. + SER. ROOM  
 SUPER AREA • 1592 SQ.FT.



FLAT NO. - 102-2102  
 UNIT TYPE • 3BHK. + SER. ROOM  
 SUPER AREA • 1592 SQ.FT.

FLAT NO. • 101-2101  
 UNIT TYPE • 3BHK. + SER. ROOM  
 SUPER AREA - 1592 SQ.FT.



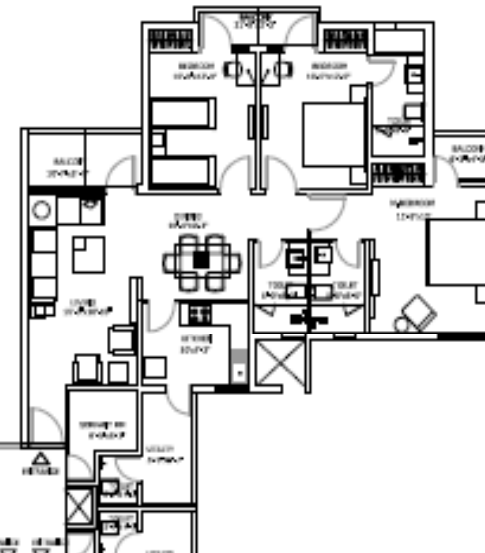
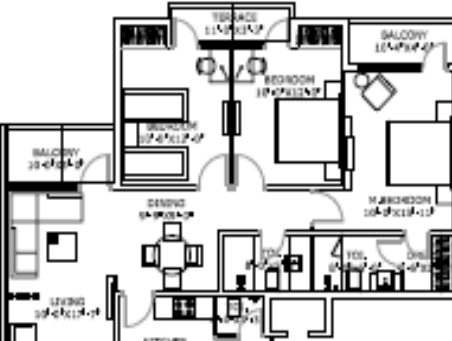
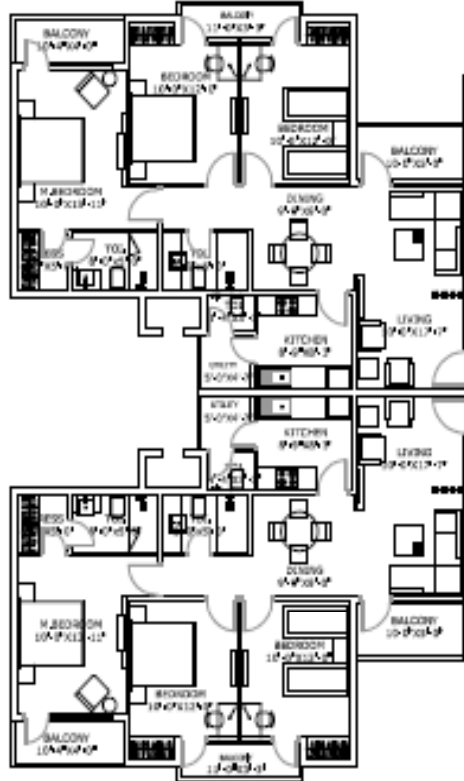
# BLOCK -9

FLAT NO. - 104-2104  
 UNIT TYPE • 3BHK, + SER, TOILET  
 SUPER AREA • 1415 SQ.FT.

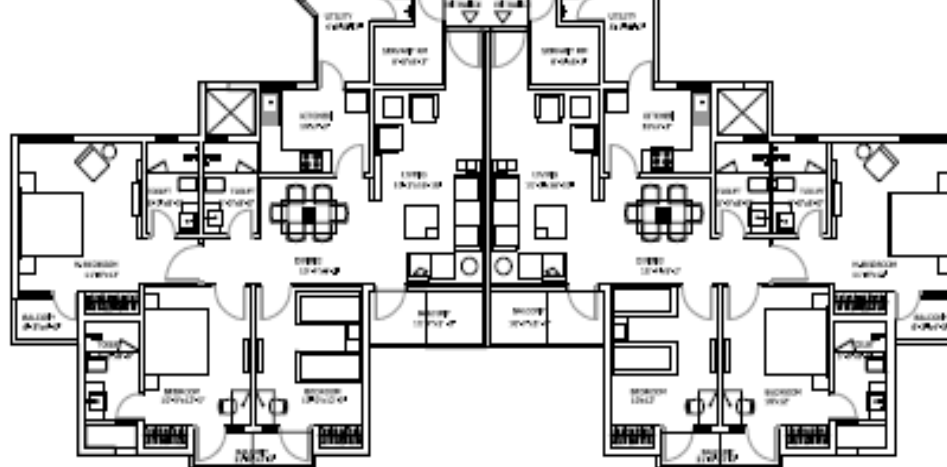
FLAT NO. • 105-2105  
 UNIT TYPE - 3BHK, + SER, TOILET  
 SUPER AREA - 1415 SQ.FT.



FLAT NO. • 106-2106  
 UNIT TYPE • 3BHK, + SER, ROOM  
 SUPER AREA • 1592 SQ.FT.



FLAT NO. • 103-2103  
 UNIT TYPE - 3BHK, + SER, TOILET  
 SUPER AREA - 1415 SQ.FT.



FLAT NO. - 102-2102  
 UNIT TYPE - 3BHK, + SER, ROOM  
 SUPER AREA • 1592 SQ.FT.

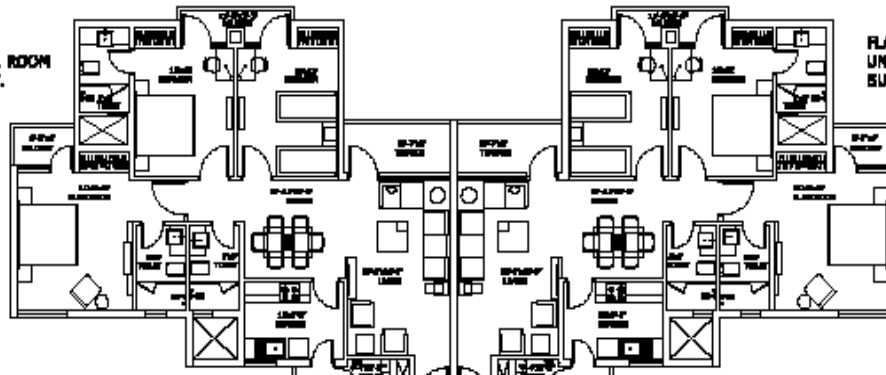
FLAT NO. • 101-2101  
 UNIT TYPE • 3BHK, + SER, ROOM  
 SUPER AREA - 1592 SQ.FT.



# BLOCK -10

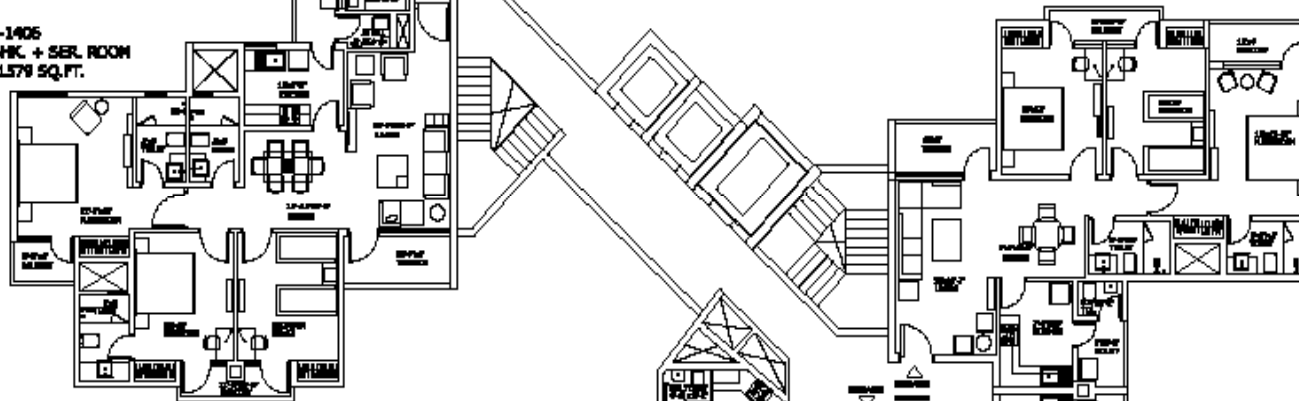
FLAT NO. - 101-1401  
UNIT TYPE - 3BHK. + SER. ROOM  
SUPER AREA - 1579 SQ.FT.

FLAT NO. - 102-1402  
UNIT TYPE - 3BHK. + SER. ROOM  
SUPER AREA - 1579 SQ.FT.



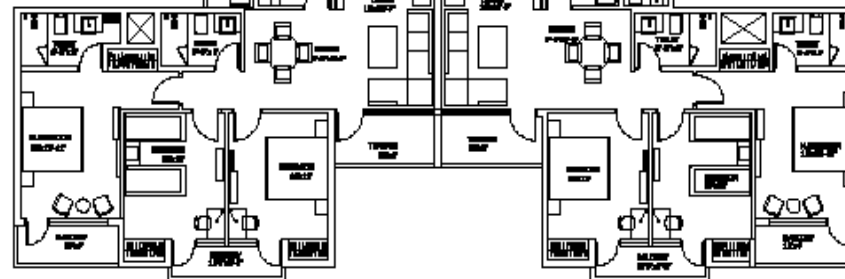
FLAT NO. - 103-1403  
UNIT TYPE - 3BHK. + SER. TOILET  
SUPER AREA - 1408 SQ.FT.

FLAT NO. - 106-1406  
UNIT TYPE - 3BHK. + SER. ROOM  
SUPER AREA - 1579 SQ.FT.



FLAT NO. - 105-1405  
UNIT TYPE - 3BHK. + SER. TOILET  
SUPER AREA - 1420 SQ.FT.

FLAT NO. - 104-1404  
UNIT TYPE - 3BHK. + SER. TOILET  
SUPER AREA - 1408 SQ.FT.



# BLOCK -11

FLAT NO. - 102-1402  
UNIT TYPE - 3BHK. + SER. ROOM  
SUPER AREA - 1579 SQ.FT.

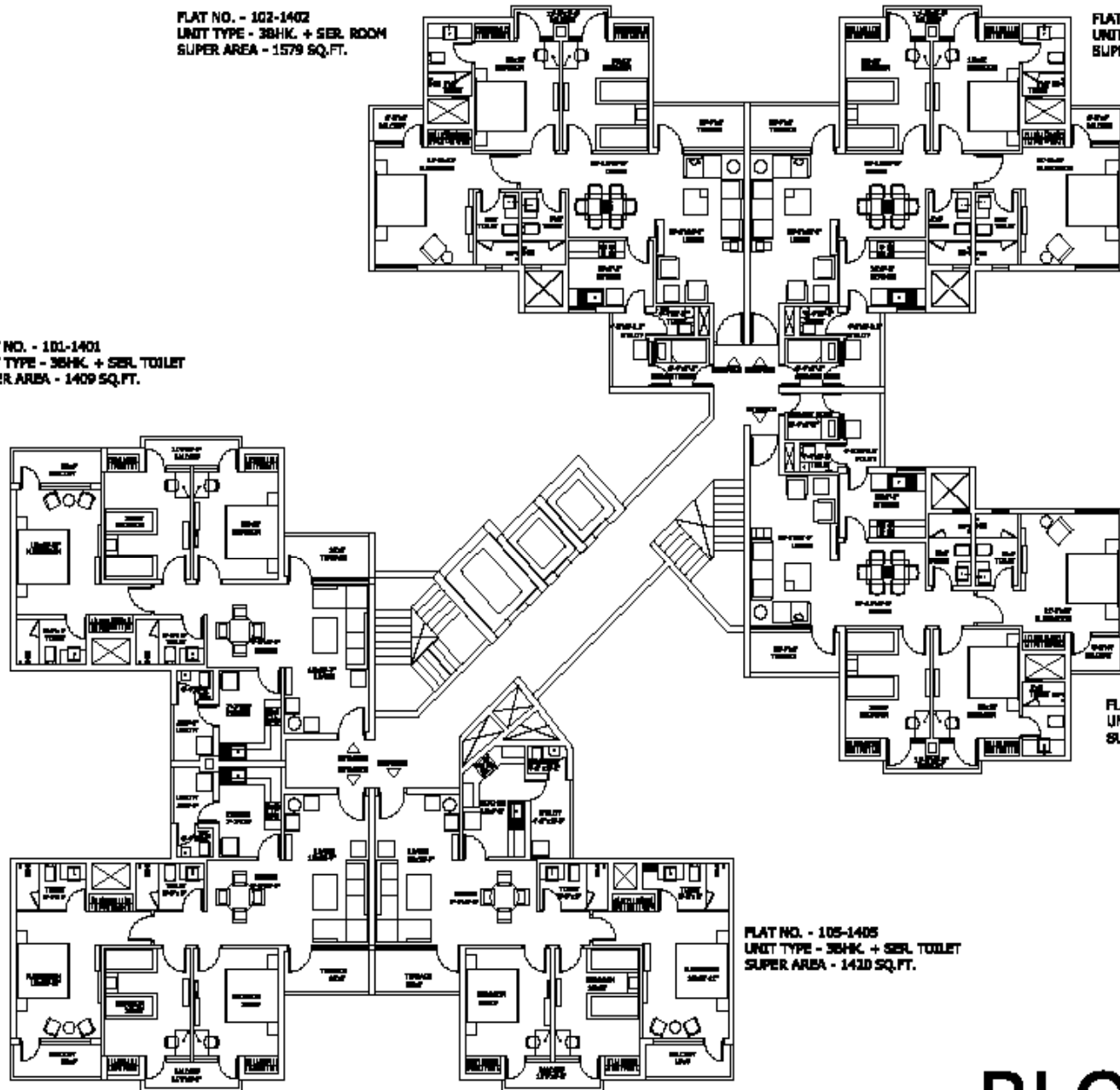
FLAT NO. - 103-1403  
UNIT TYPE - 3BHK. + SER. ROOM  
SUPER AREA - 1579 SQ.FT.

FLAT NO. - 101-1401  
UNIT TYPE - 3BHK. + SER. TOILET  
SUPER AREA - 1409 SQ.FT.

FLAT NO. - 104-1404  
UNIT TYPE - 3BHK. + SER. ROOM  
SUPER AREA - 1579 SQ.FT.

FLAT NO. - 106-1406  
UNIT TYPE - 3BHK. + SER. TOILET  
SUPER AREA - 1409 SQ.FT.

FLAT NO. - 105-1405  
UNIT TYPE - 3BHK. + SER. TOILET  
SUPER AREA - 1420 SQ.FT.



# BLOCK -12

FLAT NO. - 102-1402  
UNIT TYPE - 3BHK. + SER. ROOM  
SUPER AREA - 1579 SQ.FT.

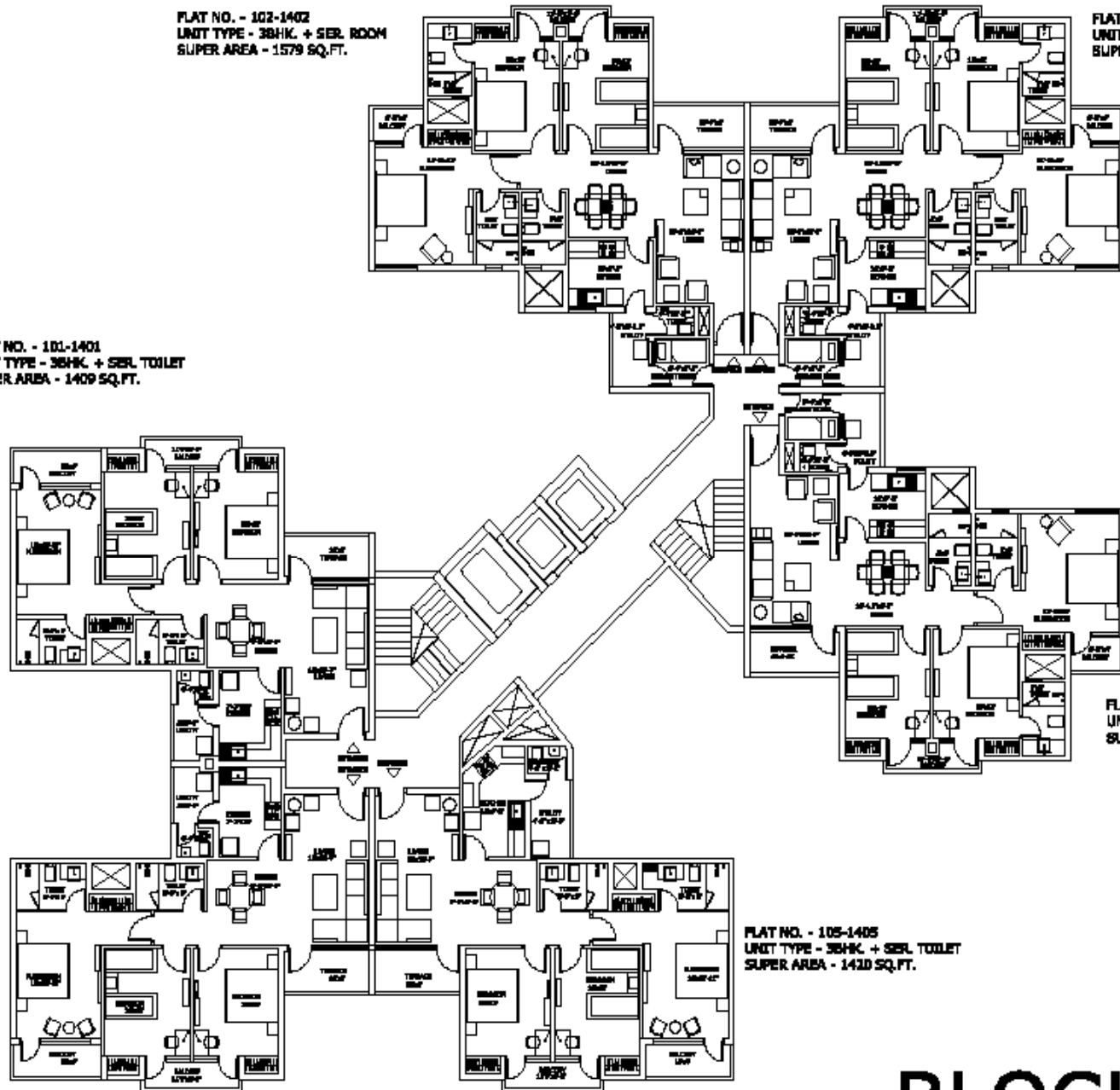
FLAT NO. - 103-1403  
UNIT TYPE - 3BHK. + SER. ROOM  
SUPER AREA - 1579 SQ.FT.

FLAT NO. - 101-1401  
UNIT TYPE - 3BHK. + SER. TOILET  
SUPER AREA - 1409 SQ.FT.

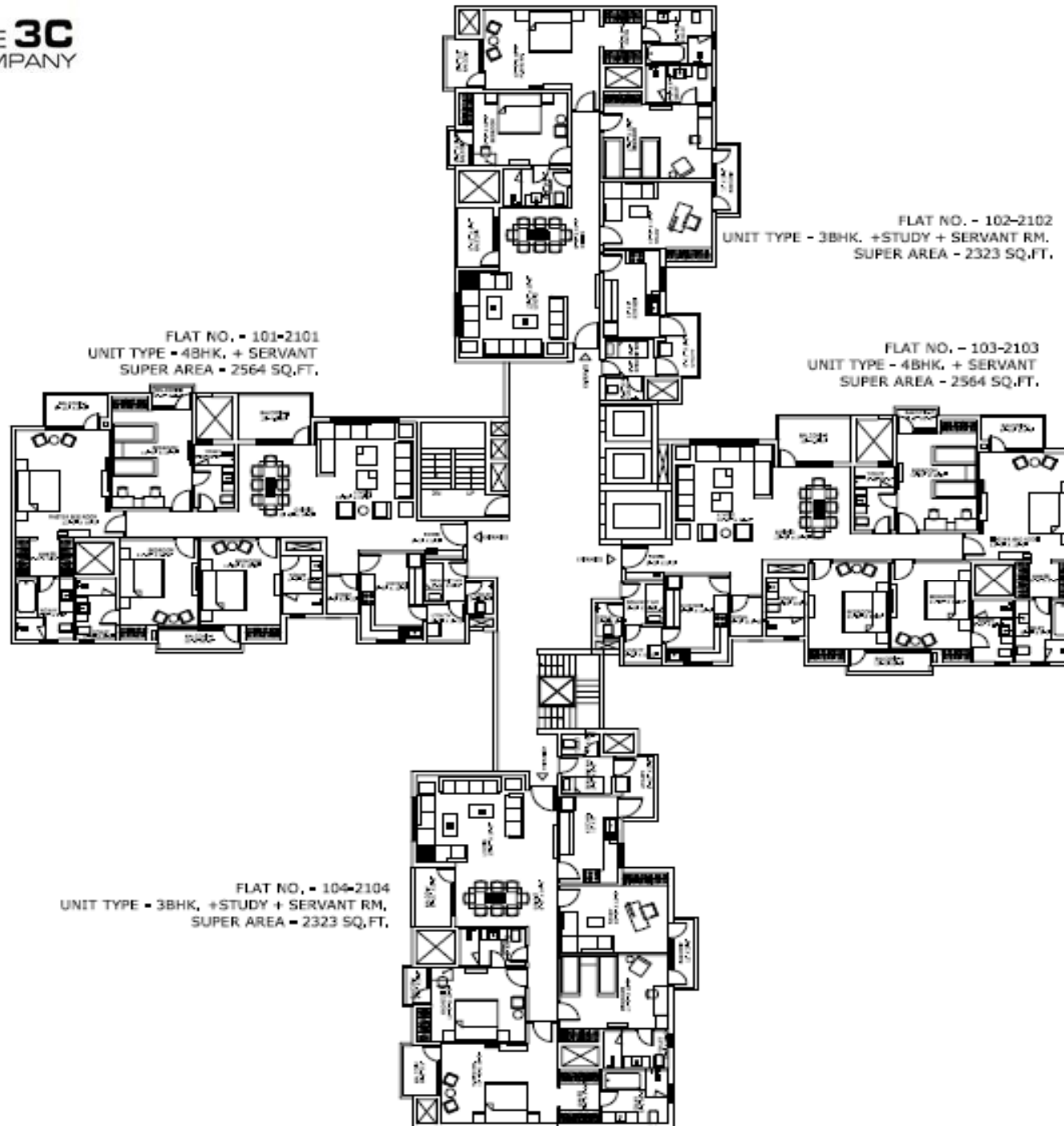
FLAT NO. - 104-1404  
UNIT TYPE - 3BHK. + SER. ROOM  
SUPER AREA - 1579 SQ.FT.

FLAT NO. - 106-1406  
UNIT TYPE - 3BHK. + SER. TOILET  
SUPER AREA - 1409 SQ.FT.

FLAT NO. - 105-1405  
UNIT TYPE - 3BHK. + SER. TOILET  
SUPER AREA - 1420 SQ.FT.



# BLOCK -12 A



**BLOCK -30**

## Price List

|   |                      |
|---|----------------------|
| <b>Basic Sale Price (BSP) Rs. 3500/- sqft.</b>  |                      |
| <b>New Tower No. 22 @ Rs. 3750/sqft.</b>  |                      |
| <b>Preferential Location Charge (PLC)</b>   |                      |
| Ground Floor  | Rs. 150 Per Sq. Ft.  |
| 1st Floor   | Rs. 100 Per Sq. Ft.  |
| 2nd Floor, 3 & 4 Floor  | Rs. 75 Per Sq. Ft.   |
| 5th , 6th & 7th Floor   | Rs. 50 Per Sq. Ft.   |
| Landscape Facing  | Rs. 50 Per Sq. Ft.   |
| Lease Rent  | Rs. 100 Per Sq. Ft.  |
| Car Parking Charges (covered)   | Rs. 2,00,000 Per Bay |
| ESC ( Electric Substation Charges )   | Rs. 40 Per Sq. Ft.   |
| FFC ( Fire Fighting Charges )   | Rs. 40 Per Sq. Ft.   |
| Power backup Charges  | Rs. 40 Per Sq. Ft.   |
| Club Member Ship  | Rs. 1,25,000/-       |
| IFMS  | Rs. 50 Per Sq. Ft.   |
| <p><b>Notes:</b></p> <ol style="list-style-type: none"> <li>Prices are Escalation free but subject to revision/withdrawal without notice at company's sole discretion.</li> <li>One basement Car Parking along with an apartment is mandatory.</li> <li>Stamp Duty, Registration Charges, Legal/miscellaneous expenses etc., shall be payable by the Allottee at the time of offer of possession.</li> <li>Prices, terms and conditions stated herein are merely indicative with a view to acquaint the applicant and are not exhaustive. For detailed terms and conditions please refer to the application form and Flat Buyer's Agreement.</li> <li>Membership of club is mandatory.</li> <li>Cheque / Draft to be issued in favour of "Lotus Panache A/c – GGPLL"</li> </ol> |                      |

## Payment plan

### DOWN PAYMENT PLAN (Rebate 10 % on BSP)

On application for booking  
Within 45 days from Allotment  
At the time of Notice for possession

10%  
85% + Car Park + PLC + Lease Rent  
5% + IFMS + Power backup Charges+  
Club Membership + ESC +FFC

### CONSTRUCTION LINKED PAYMENT PLAN

On application for Booking  
Within 45 days from Allotment  
Within 90 days from Allotment  
On Completion of Ground floor roof slab  
On Completion of 4<sup>th</sup> floor roof slab  
On Completion of 8<sup>th</sup> floor roof slab  
On Completion of 12<sup>th</sup> floor roof slab  
On Completion of 16<sup>th</sup> floor roof slab  
On casting of Top Floor Roof Slab  
On completion of Brick work  
On completion of Electrical Conduiting & Wiring  
On completion of Plumbing work  
  
At the time of notice for possession

10%  
10%  
10%  
10% + 50% Lease Rent  
7.5% + 50% Lease Rent  
7.5% + 50 % Car Park  
7.5% + 50 % Car Park  
7.5% + 50 % PLC  
7.5% + 50 % PLC  
7.5% + 100% FFC  
5% + 100% ESC  
  
5% + 100% Club membership  
+ 100% Power Backup charges  
  
5% + 100% IFMS



SUMANGALAM PROPMART PVT. LTD.

F 27 / 28, Sector - 18 , Noida

Mobile : +919560396002/03

Toll free : 1800 - 103 - 7707

SMS <HOME> to 53030

Email : [info@sumangalampropmart.com](mailto:info@sumangalampropmart.com)

Website : [www.sumangalampropmart.com](http://www.sumangalampropmart.com) , [www.3clotuspanachenoida.com](http://www.3clotuspanachenoida.com)