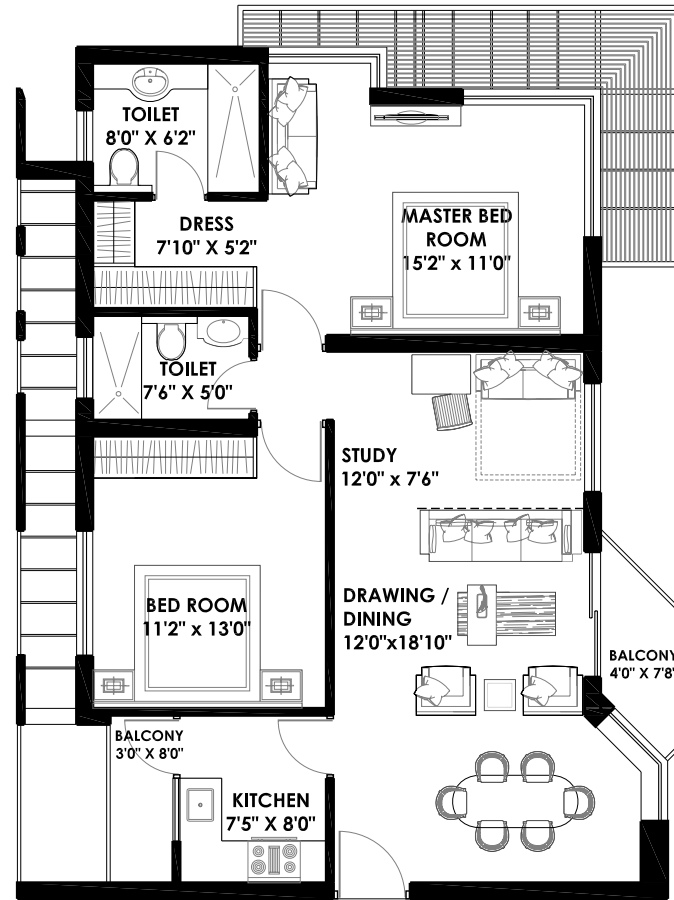


2 BHK + Study

Built Area = 95.10 m²

= 1023 ft²

Sale Area = 1207 ft²



3 BHK + SERVANT (Stairs side)

Built Area = 126.00 m²

= 1356 ft²

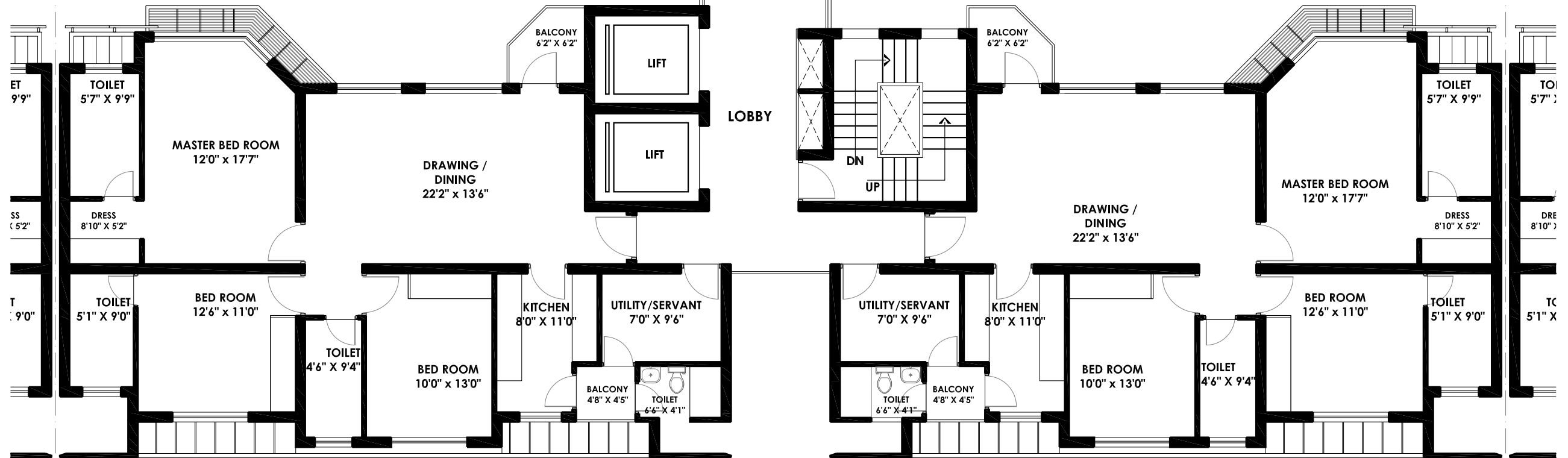
Sale Area = 1600 ft²

3 BHK + SERVANT (Stairs side)

Built Area = 126.00 m²

= 1356 ft²

Sale Area = 1600 ft²



Tower-2